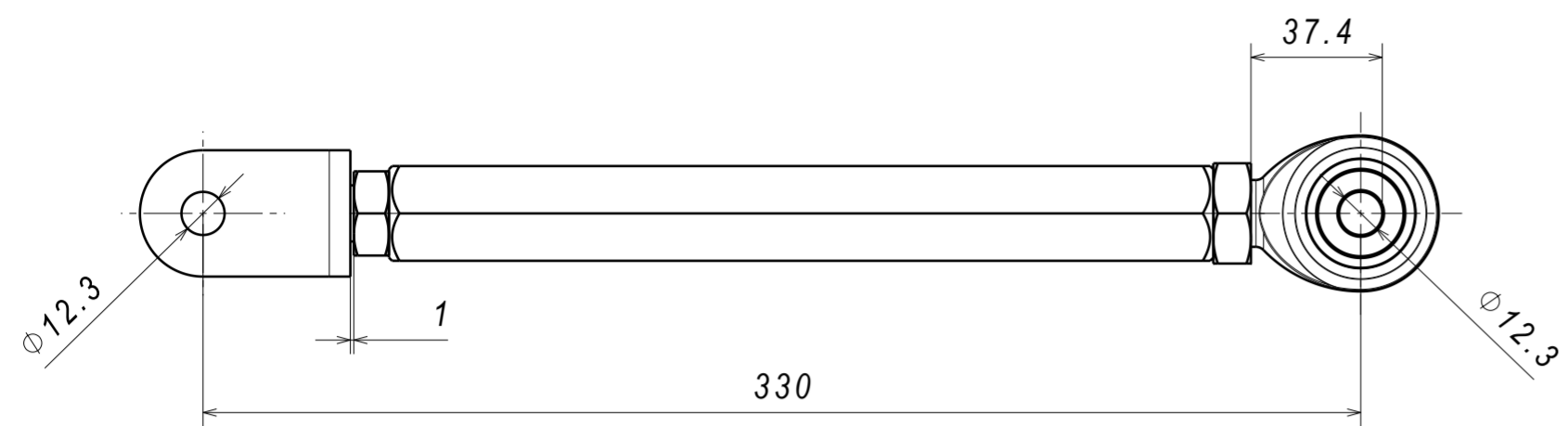
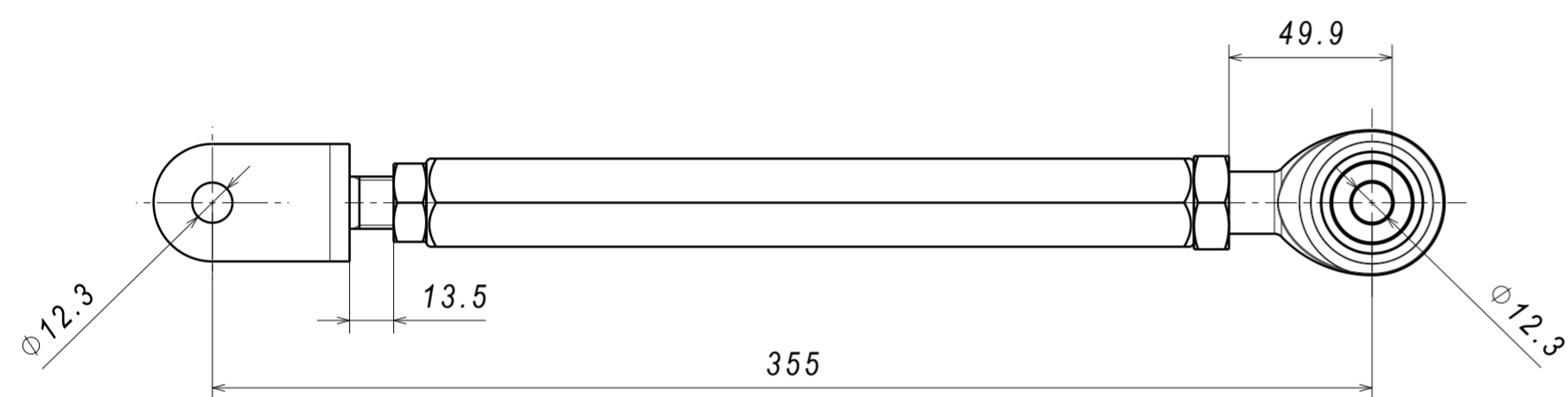


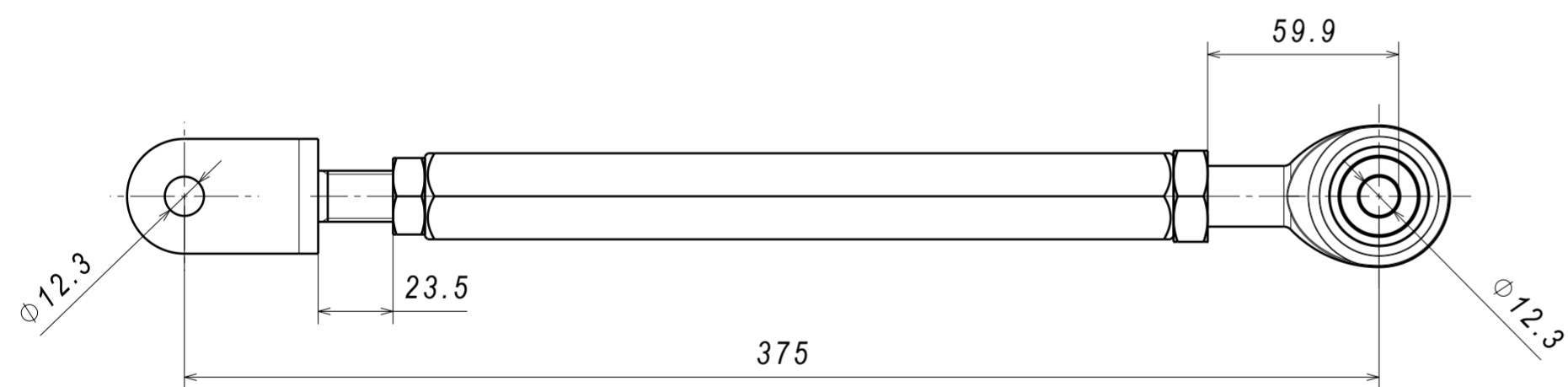
SUGGESTED ARM LENGTH ADJUSTMENT MEASUREMENTS



MINIMUM LENGTH - 330 mm  
(MEASURED BETWEEN HOLE CENTERS)

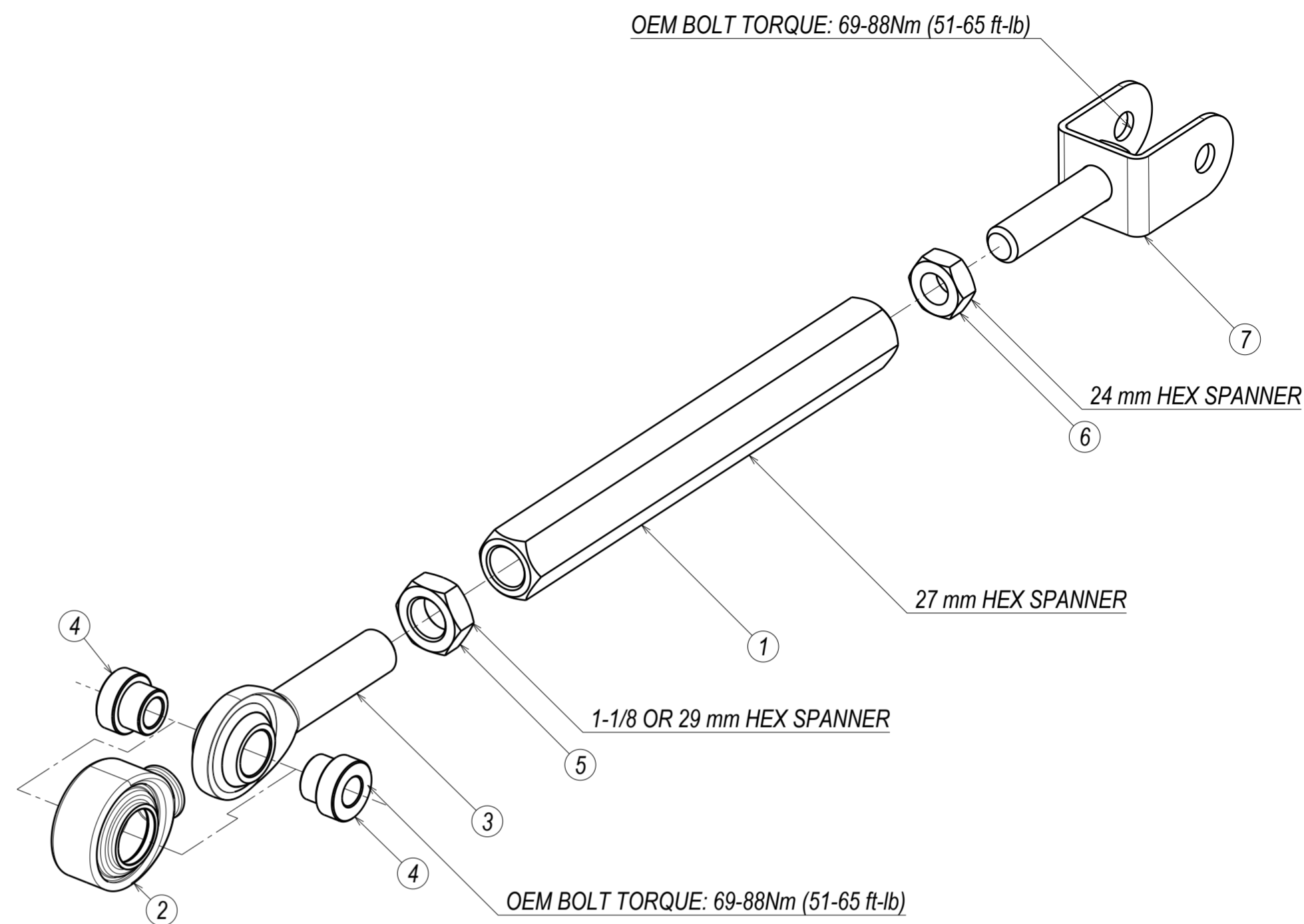


OEM LENGTH - 355 mm

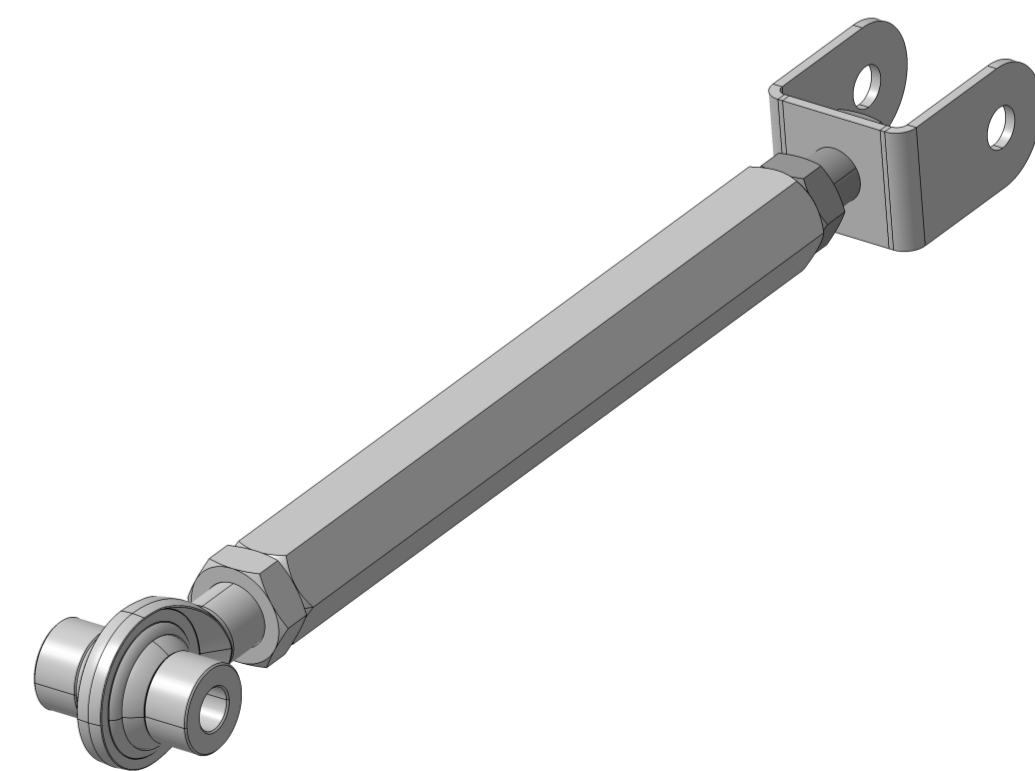
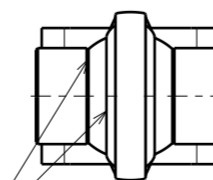


MAXIMUM LENGTH - 375 mm

EXPLODED VIEW OF STRAIGHT TOE ARM ASSEMBLY



CHECK FOR ROD END BEARING ALIGNMENT  
AFTER TIGHTENING THE ADJUSTING MECHANISM  
IT MUST BE PARALLEL TO THE BODY OF THE ROD END



FULLY ASSEMBLED  
REAR TOE ARM