

GT86-DIFF

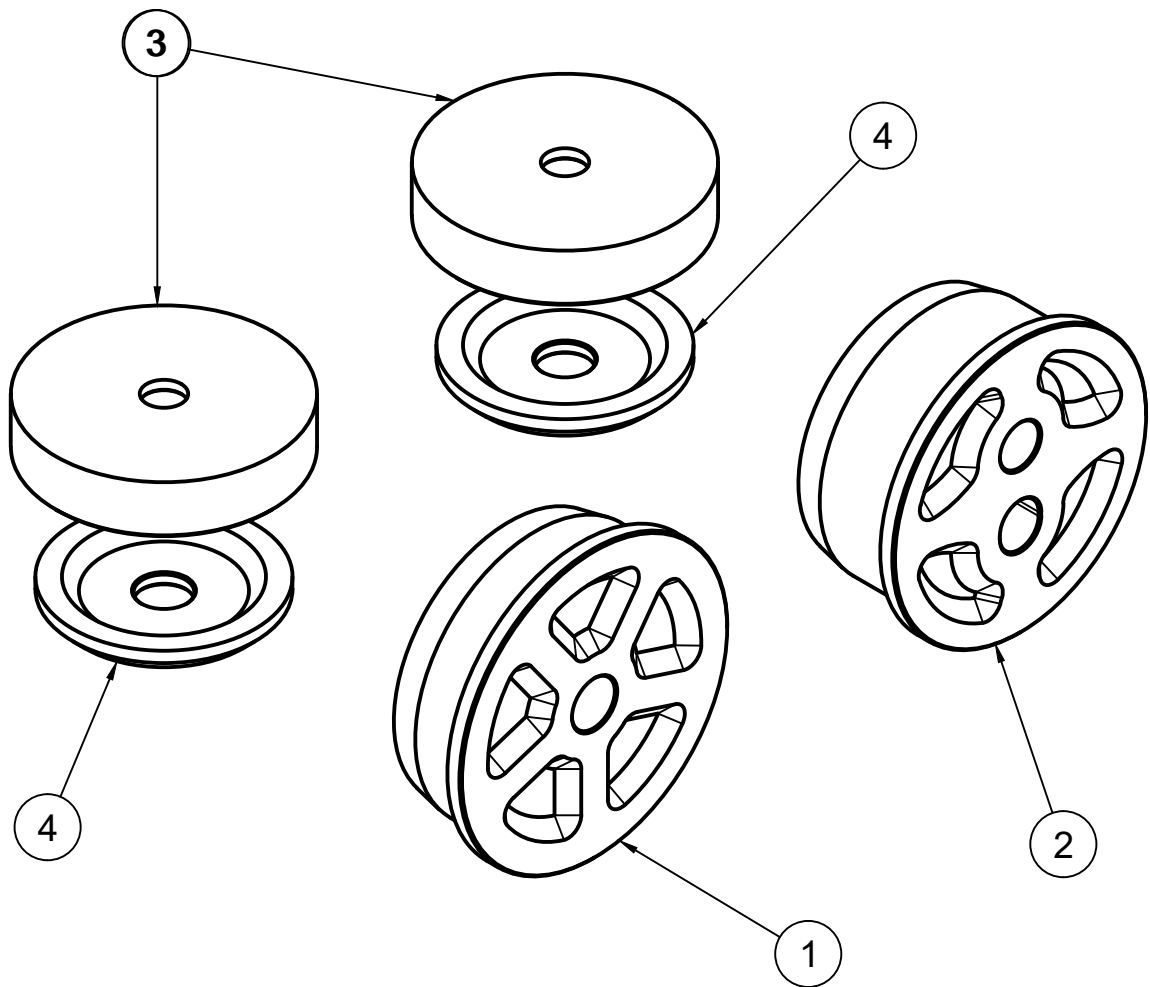


DIAGRAM A

4	LOWER DIFFERENTIAL MOUNT STOPPER	2
3	UPPER DIFFERENTIAL MOUNT STOPPER	2
2	TWO BOLT REAR DIFF BUSH	1
1	ONE BOLT REAR DIFF BUSH	1
ITEM	DESCRIPTION	QTY
PARTS LIST		

PAGE 1

GT86-DIFF

1. JACK UP VEHICLE AND REMOVE REAR WHEELS.
2. UNDO DRIVESHAFT AND PROPELLER SHAFT BOLTS.
3. REMOVE FRONT AND REAR DIFFERENTIAL MOUNTING BOLTS AND LOWER THEN LOWER AND REMOVE THE DIFFERENTIAL (AS SHOWN IN DIAGRAM B).

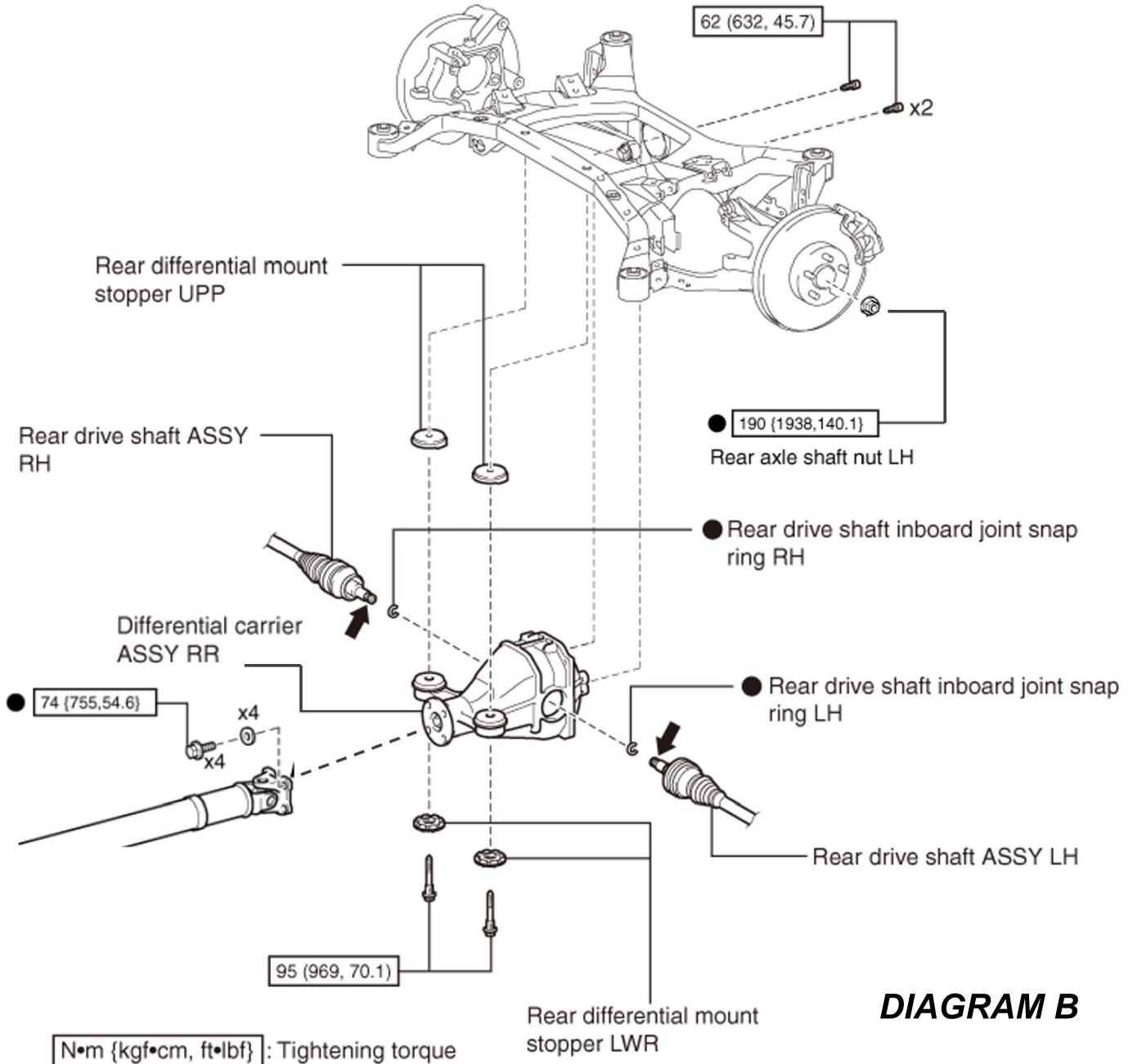


DIAGRAM B

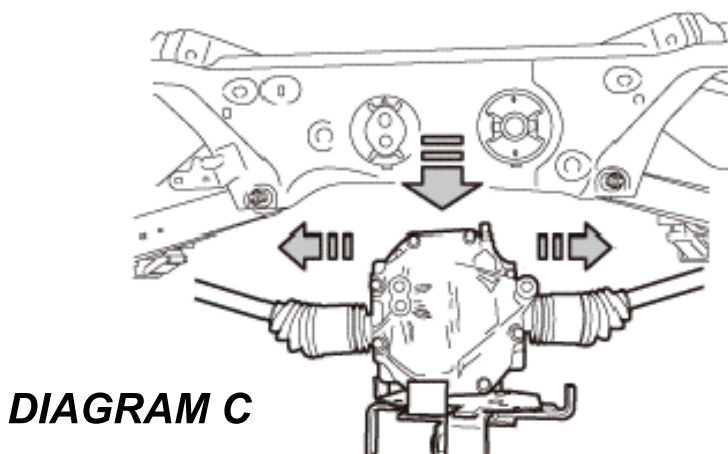
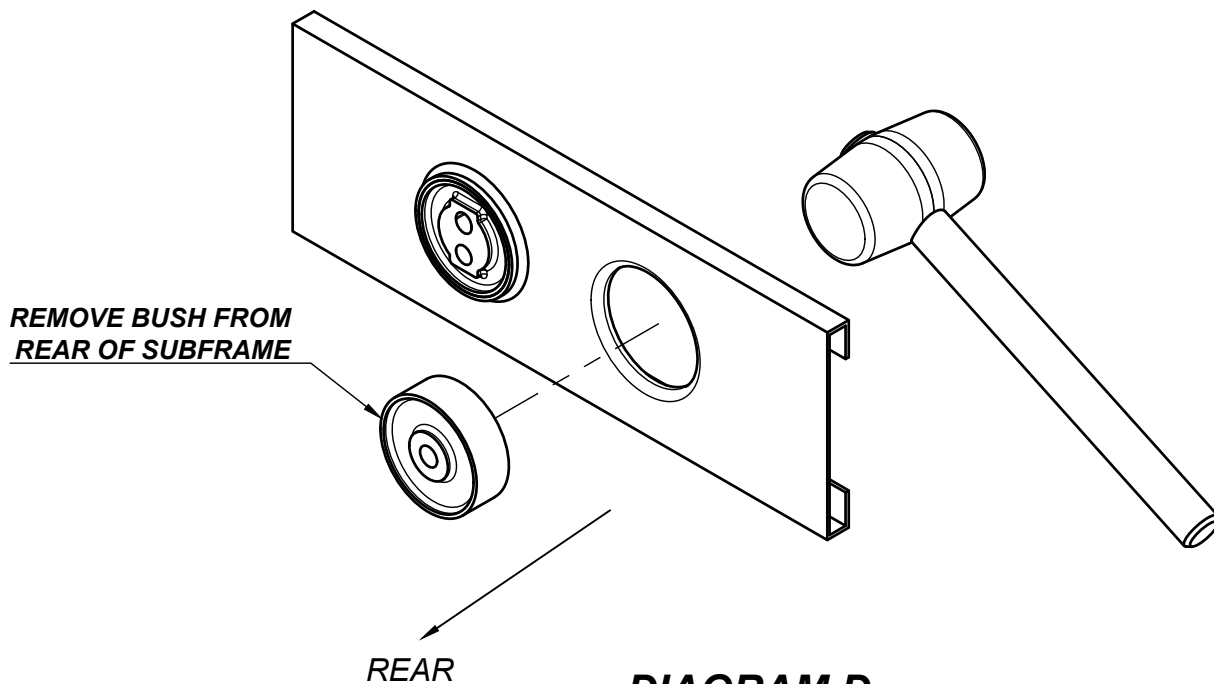


DIAGRAM C

GT86-DIFF

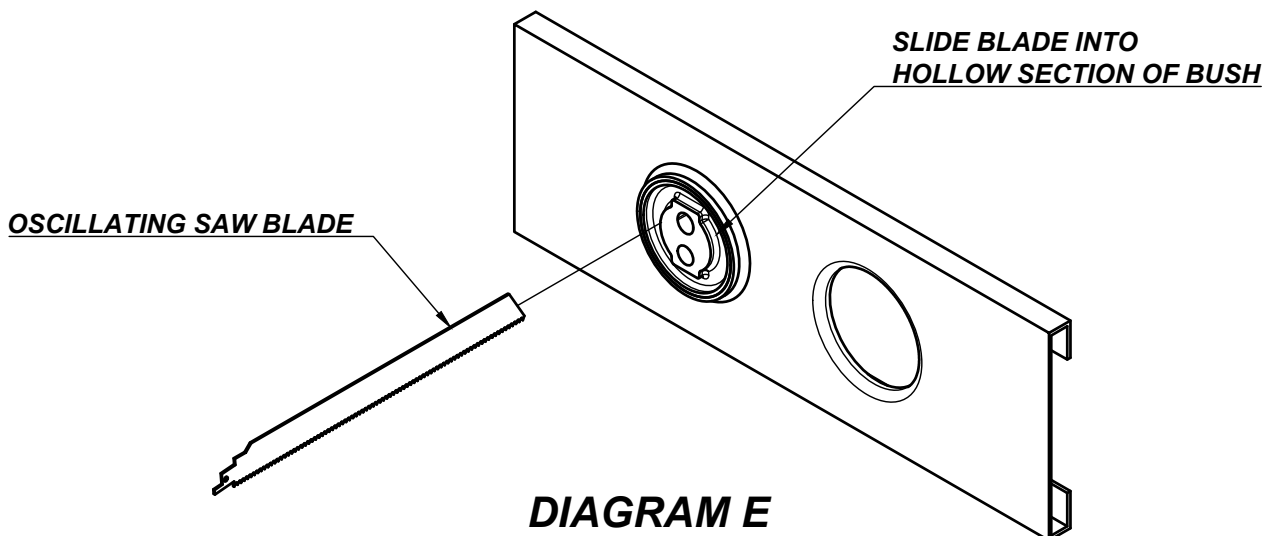
4. THE ONE BOLT OEM REAR DIFF BUSH CAN BE REMOVED SIMPLY BY USING A HAMMER OR Mallet TO PUSH IT OUT OF THE REAR OF THE SUBFRAME AS SHOWN IN DIAGRAM D.



****NOTE** THE TWO BOLT BUSH IS OIL FILLED. BE PREPARED FOR OIL SPILLAGE BEFORE PROCEEDING.**

5. CUT INTO THE TWO BOLT BUSH, START IN ONE OF THE GAPS AND WORK TOWARDS THE OUTER RACE OF THE BUSH.

CAREFULLY MAKE A CUT IN THE OUTER BUSH RACE WHILE MAKING SURE NOT TO CUT INTO THE SUBFRAME.



6. USE A PUNCH AND HAMMER TO STRIKE THE OUTER RACE OF THE BUSH UNTIL IT BECOMES FREE OF THE SUBFRAME.

IF THE BUSH REMAINS STUCK ENSURE THAT THE CUT FROM STEP 5 HAS FULLY PENETRATED THE OUTER RACE.

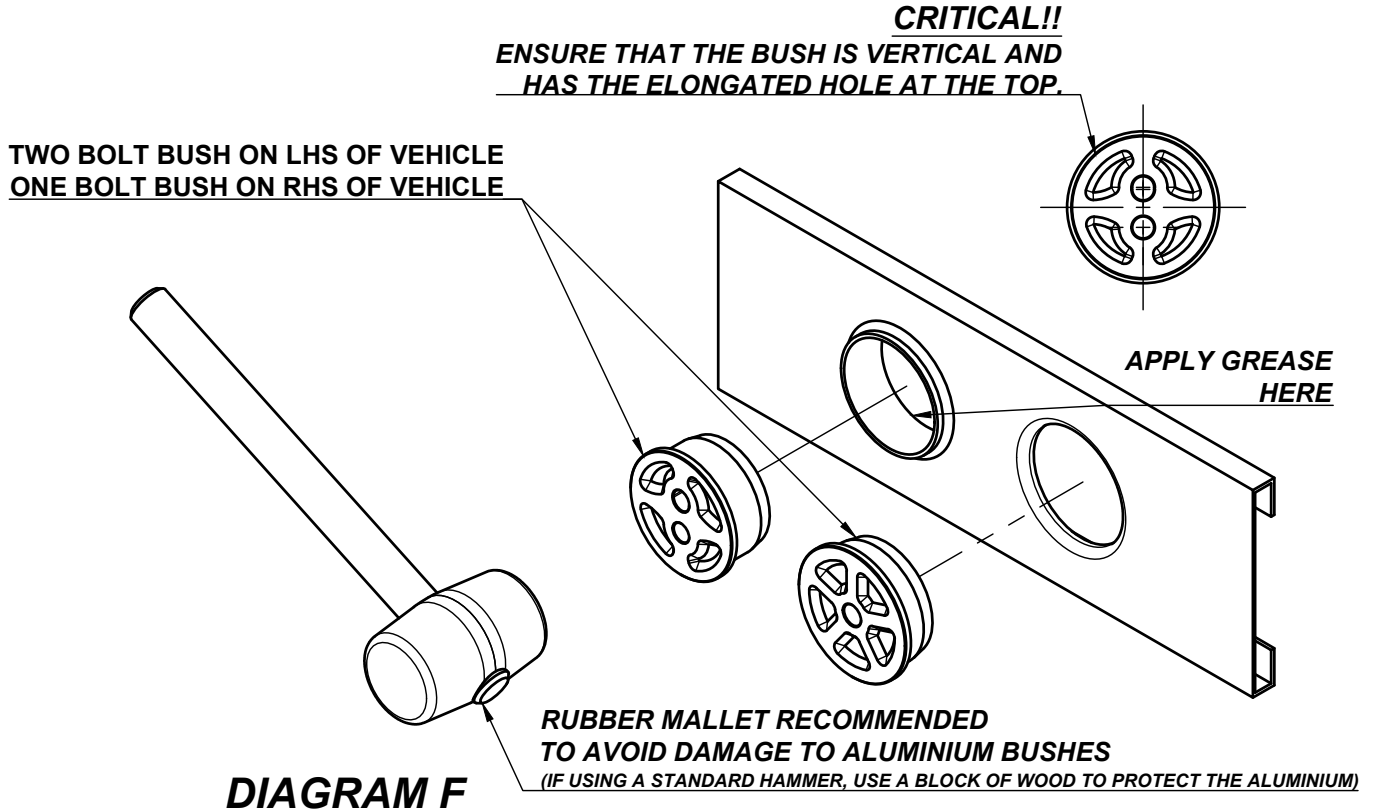
PAGE 3

GT86-DIFF

- ONCE THE OEM BUSHES ARE FULLY REMOVED, CLEAN THE INNER FACES OF THE SUBFRAME. SAND AND SMOOTH ANY CUTS MADE WHEN USING THE OSCILLATING SAW.

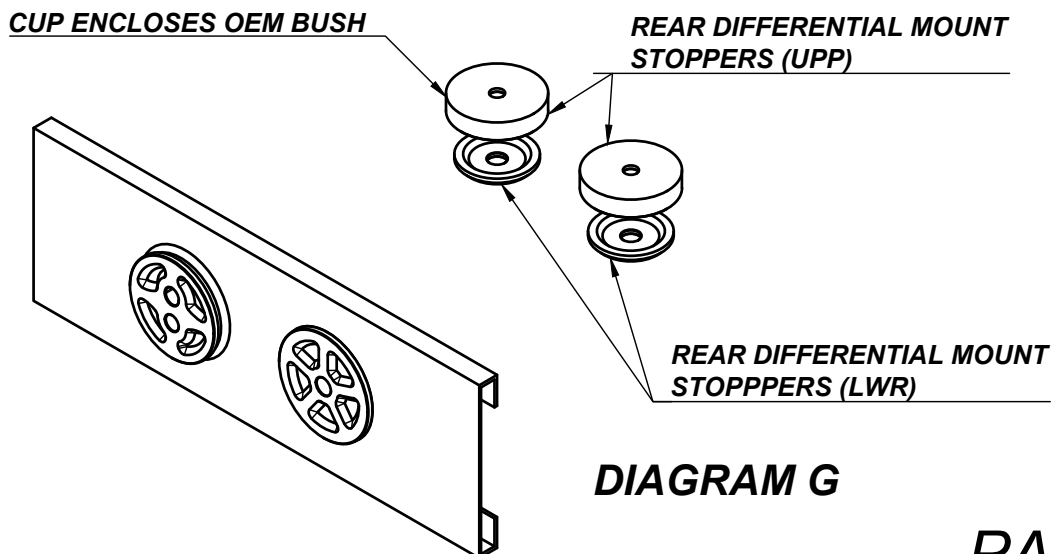
ADDING GREASE TO THE INSIDE OF THE SUBFRAME WILL MAKE INSTALL EASIER.

- ENSURE THAT THE REPLACEMENT REAR BUSHES ARE CORRECTLY ALIGNED AND USE A RUBBER Mallet TO KNOCK THEM IN TO PLACE.



- BEGIN RE-ASSEMBLY BY RAISING THE DIFFERENTIAL UP INTO THE SUBFRAME.

WHEN RE-INSTALLING THE DIFF, USE THE REPLACEMENT REAR DIFFERENTIAL MOUNT STOPPERS



- RE-ASSEMBLE USING OEM TORQUE SPECS AS SHOWN IN DIAGRAM B.

FIT THE WHEELS AND LOWER THE VEHICLE.

PAGE 4