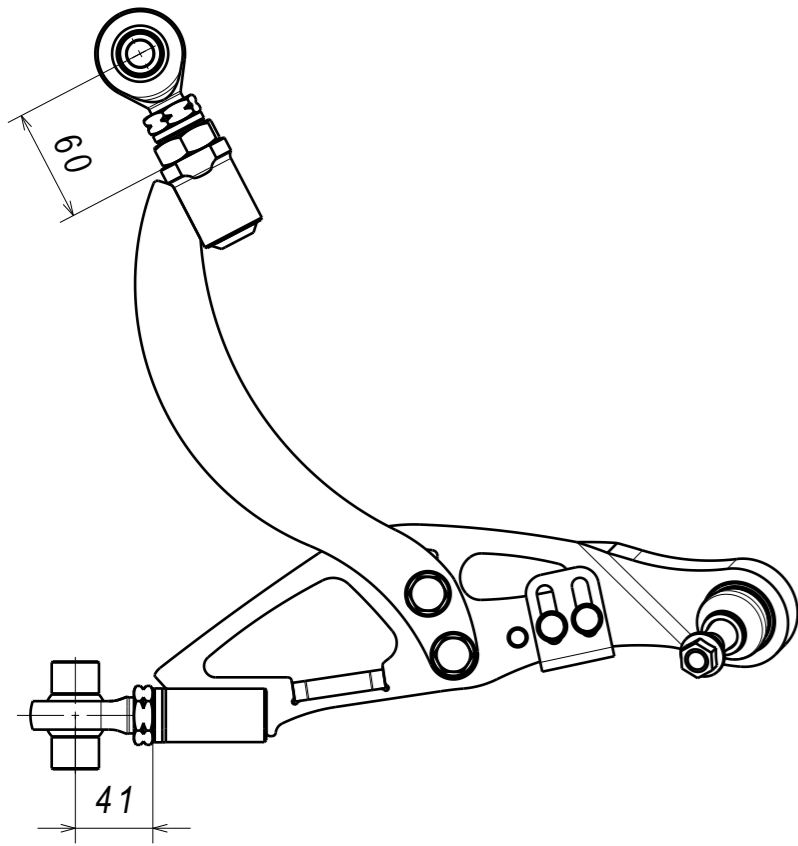
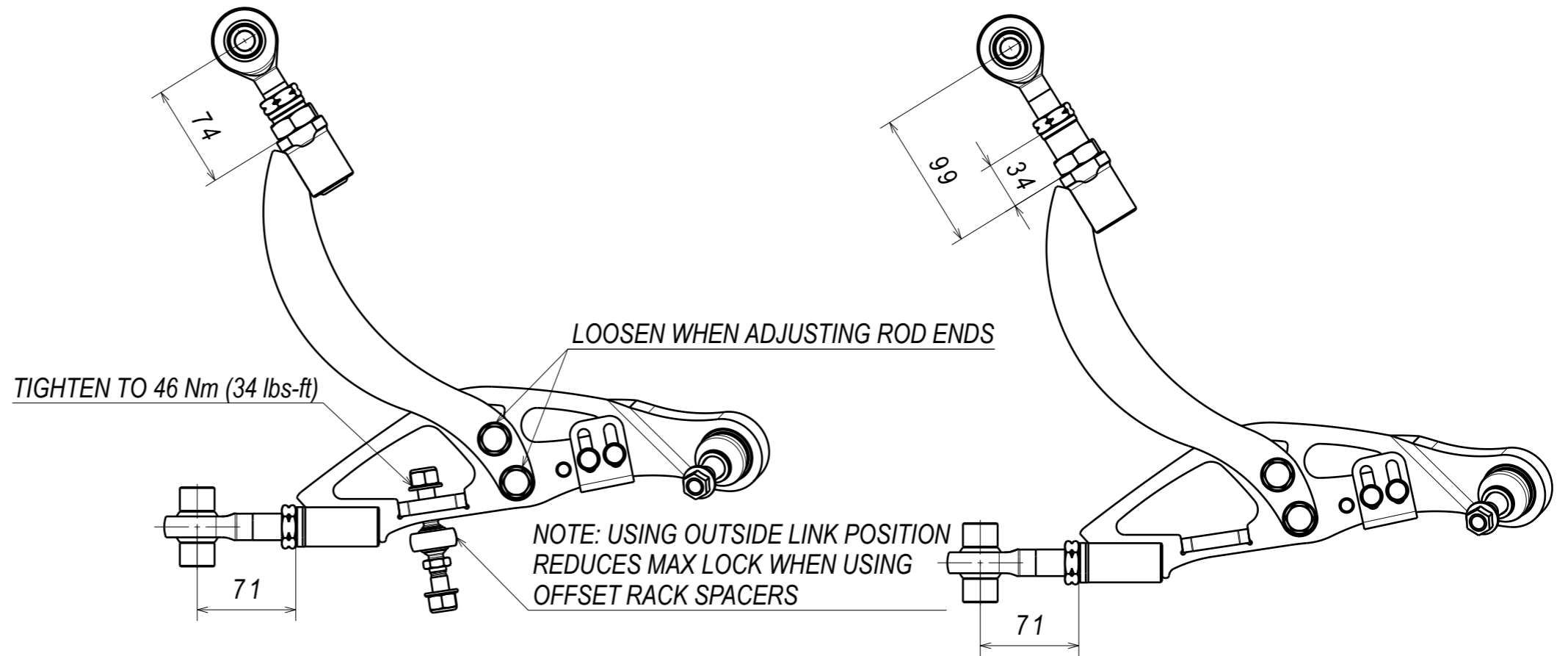


GT86-FLCA



ADJUSTMENT - MIN LENGTH (OEM + 40mm)



TIGHTEN TO 46 Nm (34 lbs-ft)

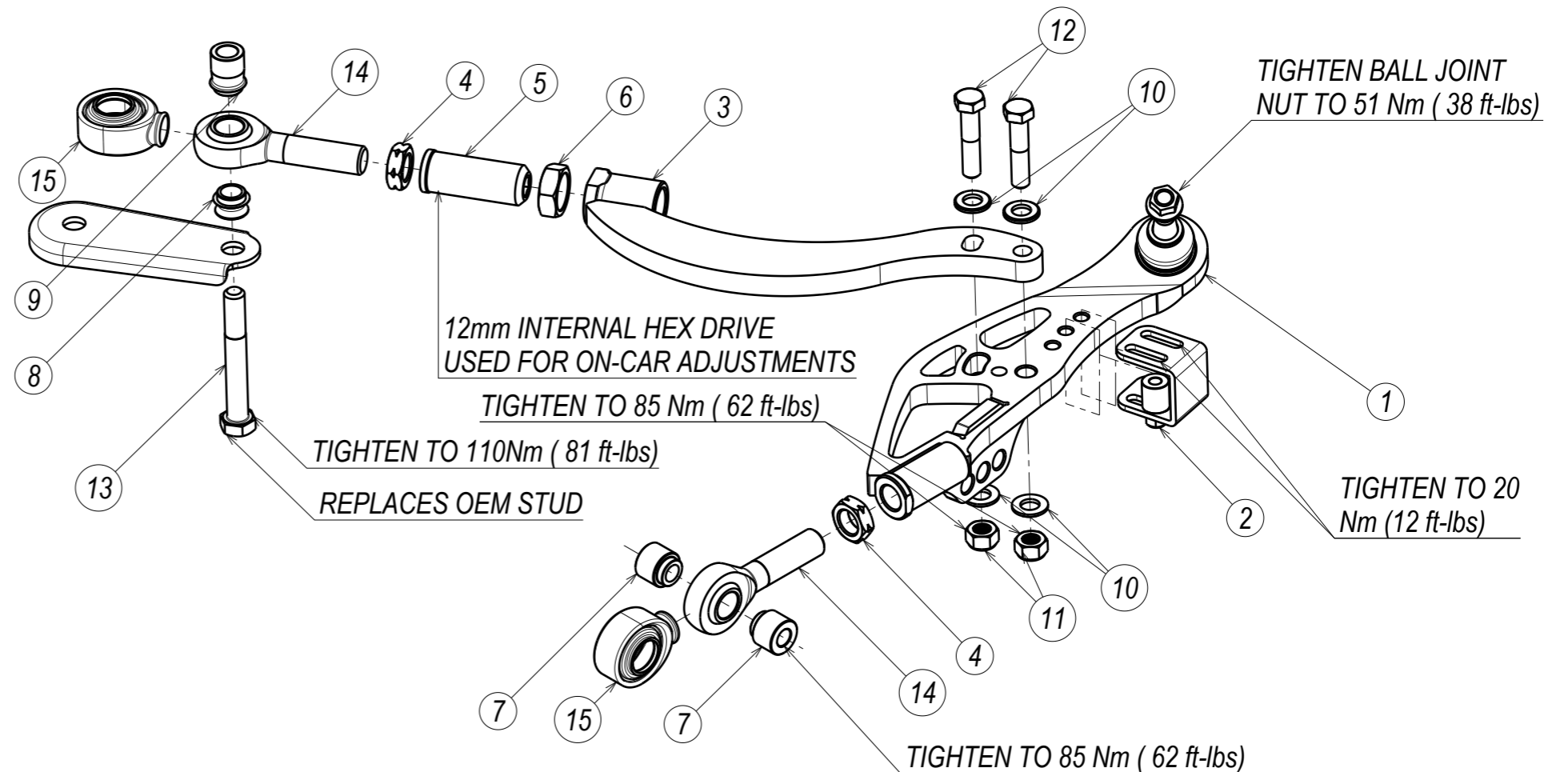
LOOSEN WHEN ADJUSTING ROD ENDS

NOTE: USING OUTSIDE LINK POSITION REDUCES MAX LOCK WHEN USING OFFSET RACK SPACERS

ADJUSTMENT - MAX LENGTH (OEM +70mm)

ADJUSTMENT - MAX LENGTH + MAX CASTER ADJUSTMENT

16	PCML12T BOOT REV2	2
15	GT86 BOTTOM A-ARM BALL JOINT	1
14	PCML12T-ES ROD END	2
13	ISO 8765 M14x1.5x100	1
12	ISO 4014 M12x55	2
11	DIN 985-8 M12x1.75	2
10	ISO 7089 12x24	4
9	SPACER PCML12T 14ID 72W HIGH MISALIGNMENT	1
8	SPACER PCML12T 14ID 42W HIGH MISALIGNMENT	1
7	SPACER PCML12T 12ID 57W	2
6	FLCA M27x2 NUT	1
5	VERNIER SLEEVE - M27x 3/4 REAR DRIVE	1
4	NUT 3/4-16 UNF 3B L/H	2
3	TENSION ROD WELDING ASM S14 R/H	1
2	GT86 - FRONT BOTTOM A-ARM LOCK STOP ASM R/H	1
1	GT86 FRONT LATERAL LINK WELD ASM R/H	1
PC NO	COMPONENT NAME	QTY



12mm INTERNAL HEX DRIVE USED FOR ON-CAR ADJUSTMENTS

TIGHTEN TO 85 Nm (62 ft-lbs)

TIGHTEN TO 110Nm (81 ft-lbs)

REPLACES OEM STUD

TIGHTEN BALL JOINT NUT TO 51 Nm (38 ft-lbs)

TIGHTEN TO 20 Nm (12 ft-lbs)

TIGHTEN TO 85 Nm (62 ft-lbs)