

GT86-RISR

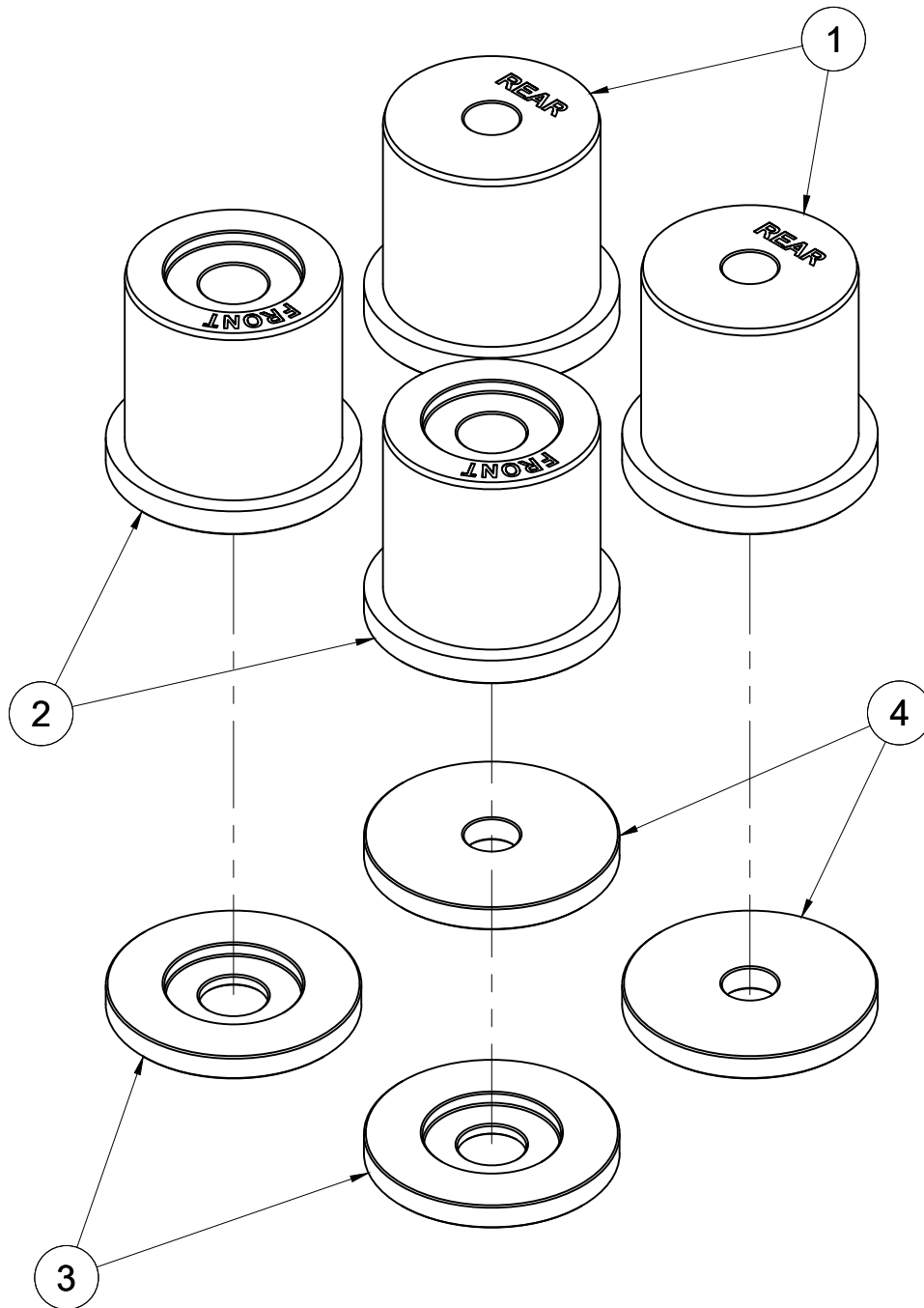


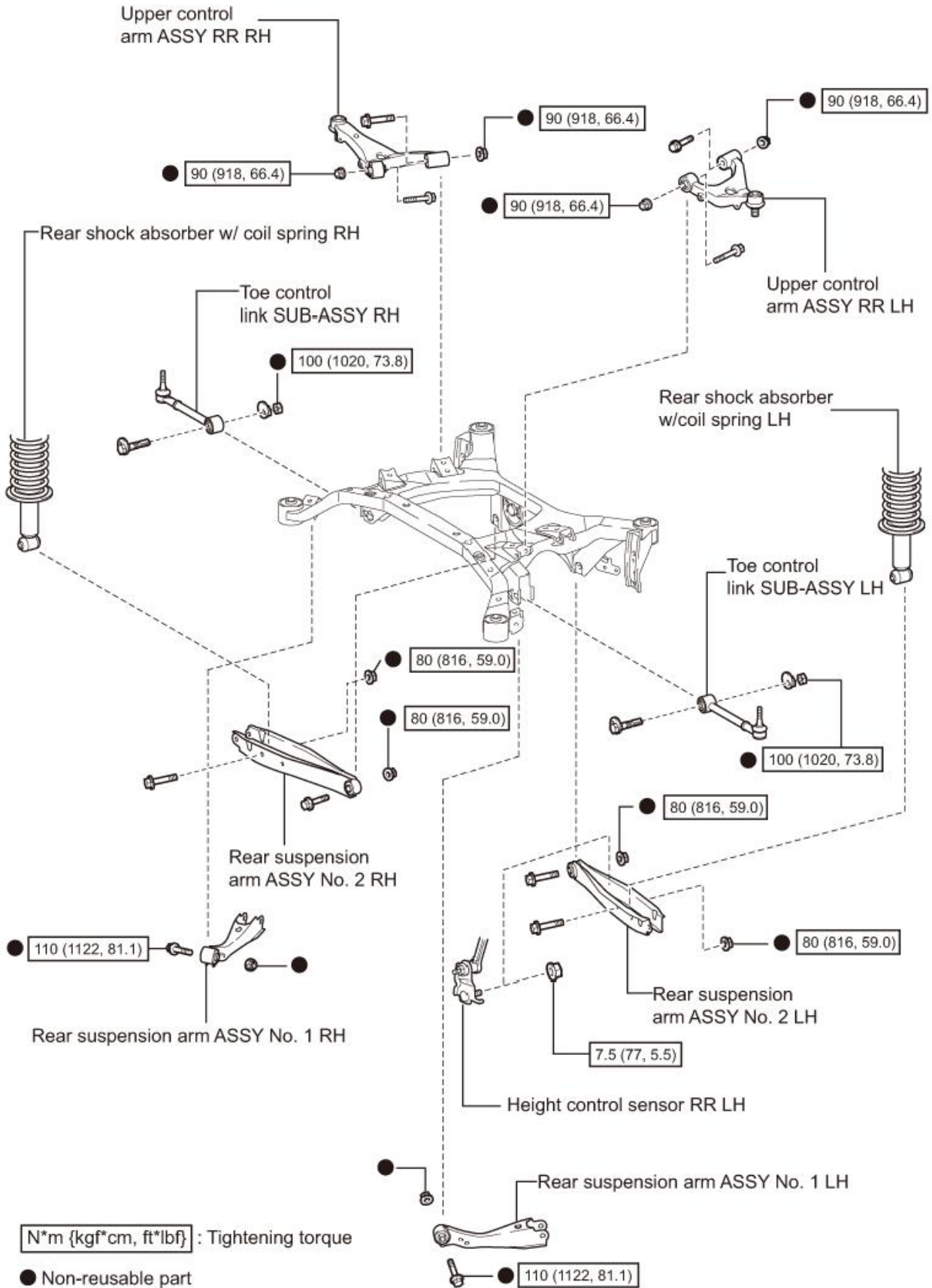
DIAGRAM A

4	REAR SOLID BUSH SPACER	2
3	FRONT SOLID BUSH SPACER	2
2	FRONT SOLID BUSH	2
1	REAR SOLID BUSH	2
ITEM	DESCRIPTION	QTY
PARTS LIST		

PAGE 1

GT86-RISR

1. JACK UP THE VEHICLE AND REMOVE THE REAR WHEELS.
2. REMOVE ALL OF THE INBOARD REAR SUSPENSION ARMS FROM THE SUBFRAME USING DIAGRAM B.



RS-10022

DIAGRAM B

PAGE 2

gktech
 .com

GT86-RISR

3. UNDO THE PROPULSION SHAFT BOLTS AND THE DIFF MOUNTS AND LOWER DOWN THE DIFFERENTIAL AS SHOWN IN DIAGRAMS C AND D.

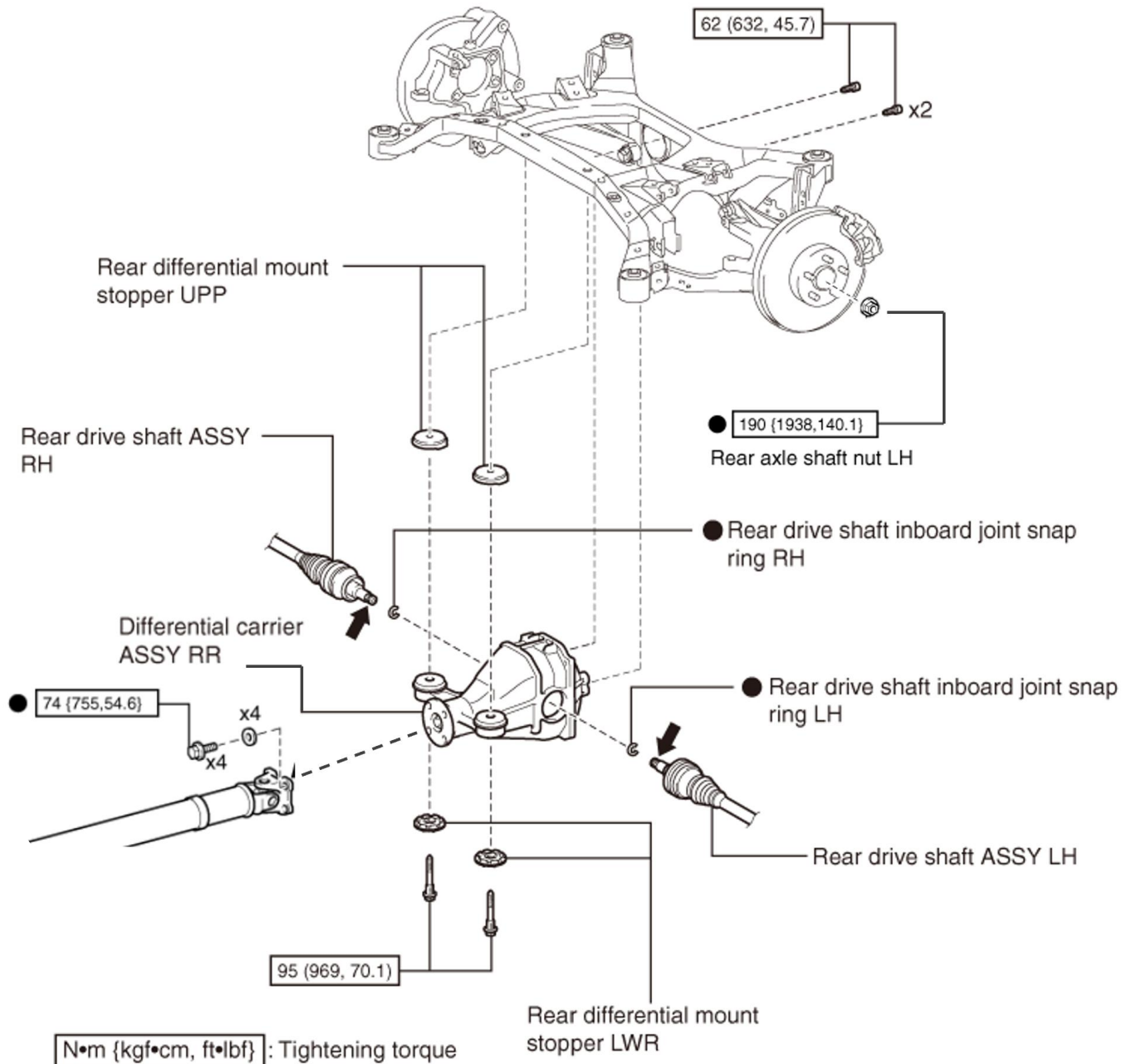


DIAGRAM C

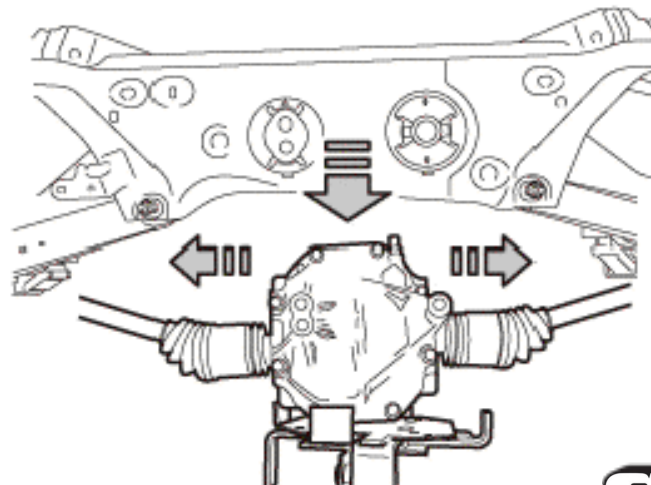
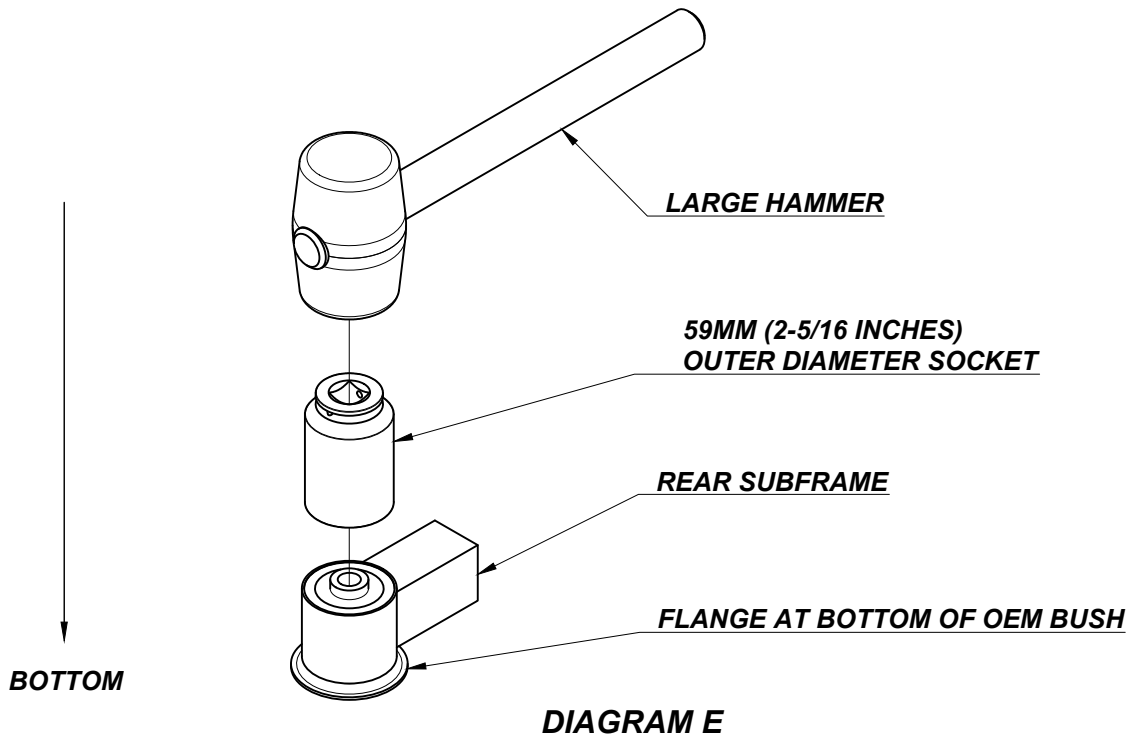


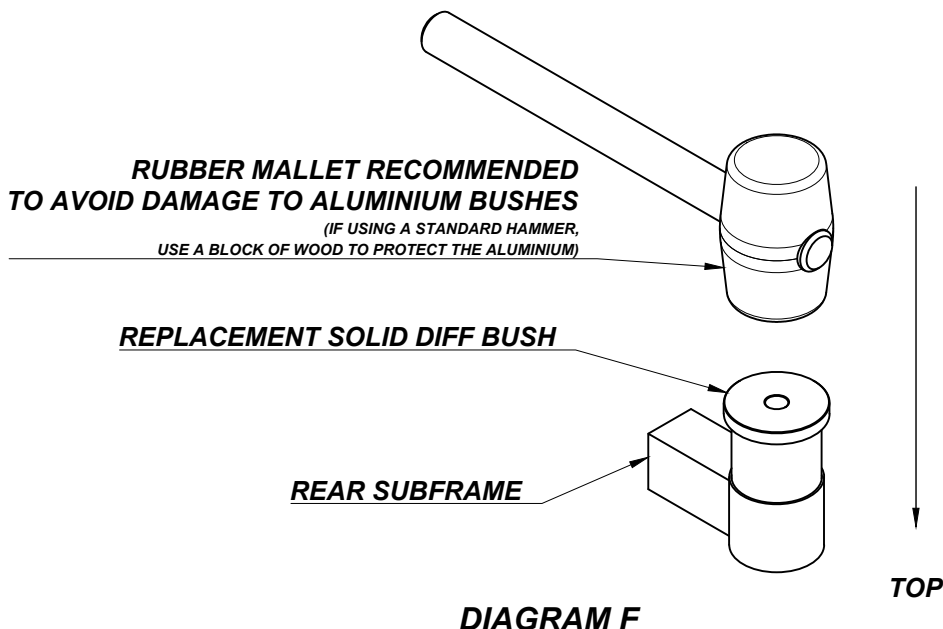
DIAGRAM D

GT86-RISR

4. REMOVE THE SUBFRAME FRONT SUPPORT BRACKET BOLTS.
5. UNDO THE SUBFRAME BOLTS AND LOWER OUT OF THE VEHICLE.
6. USE A SHARP KNIFE OR RAZOR TO CUT AWAY THE RUBBER SECTIONS AT THE TOP OF THE OEM BUSHES. (THESE WILL DAMPEN THE FORCE OF THE HAMMER STRIKES).
7. FIND A SUITABLE DIE FOR STRIKING THE OUTER RACE OF THE BUSH. A LARGE SOCKET WITH 59MM (2-5/16 INCHES) OUTER DIAMETER IS IDEAL.
8. USE THE DIE TO HAMMER THE OEM BUSHES DOWNWARDS AND OUT OF THE SUBFRAME. (ALTERNATIVELY, THE BUSHES COULD ALSO BE DRILLED AND CUT FOR REMOVAL).



9. ONCE ALL THE BUSHES HAVE BEEN REMOVED, CLEAR THE SUBFRAME FROM ANY DEBRIS AND GREASE THE INNER BUSHING SURFACES TO AID WITH INSTALLATION.
10. FLIP THE SUBFRAME OVER AND USE A RUBBER Mallet TO INSTALL THE SOLID SUBFRAME BUSHES.



GT86-RISR

11. REINSTALL THE SUBFRAME INTO THE VEHICLE USING THE DESIRED SPACER CONFIGURATION AND TORQUE TO THE OEM SPECS PROVIDED IN DIAGRAM G.

OEM REAR SUBFRAME HEIGHT: USE THE SPACERS ABOVE THE SUBFRAME AS SHOWN IN DIAGRAM G.

7.5MM RAISED SUBFRAME HEIGHT: USE THE SPACERS BELOW THE SUBFRAME AS SHOWN IN DIAGRAM G.

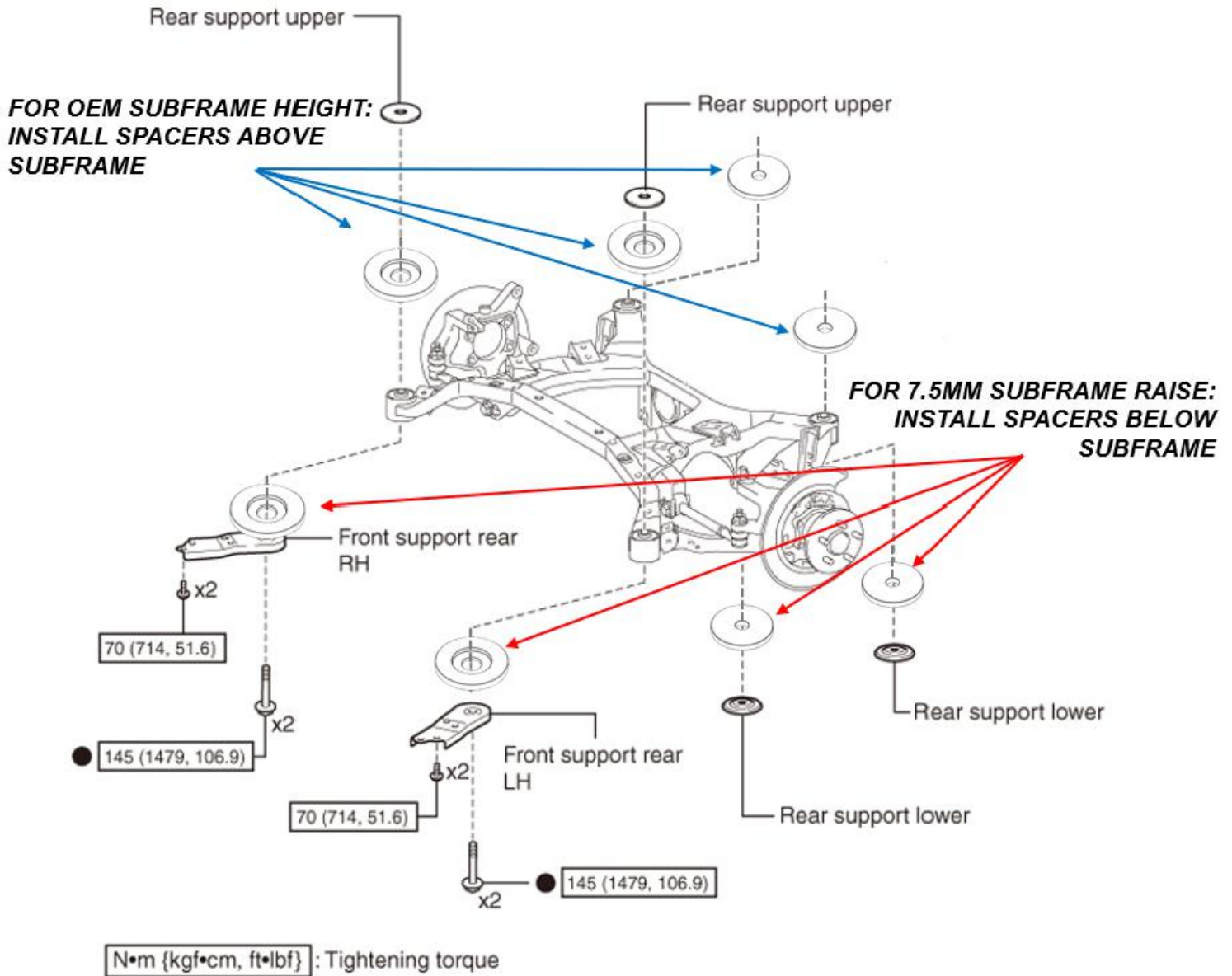
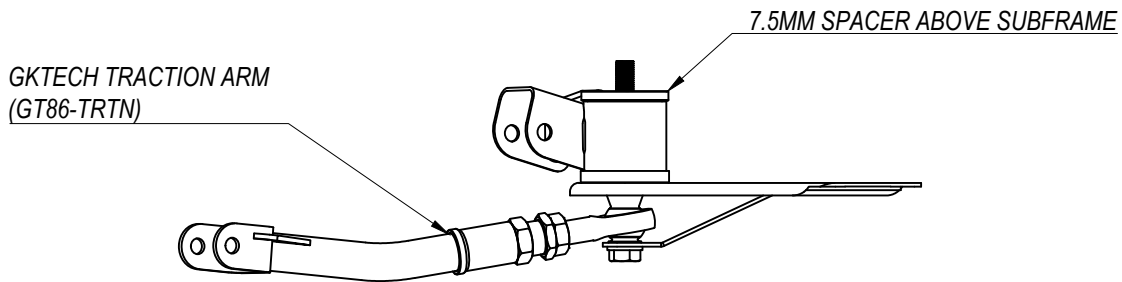


DIAGRAM G

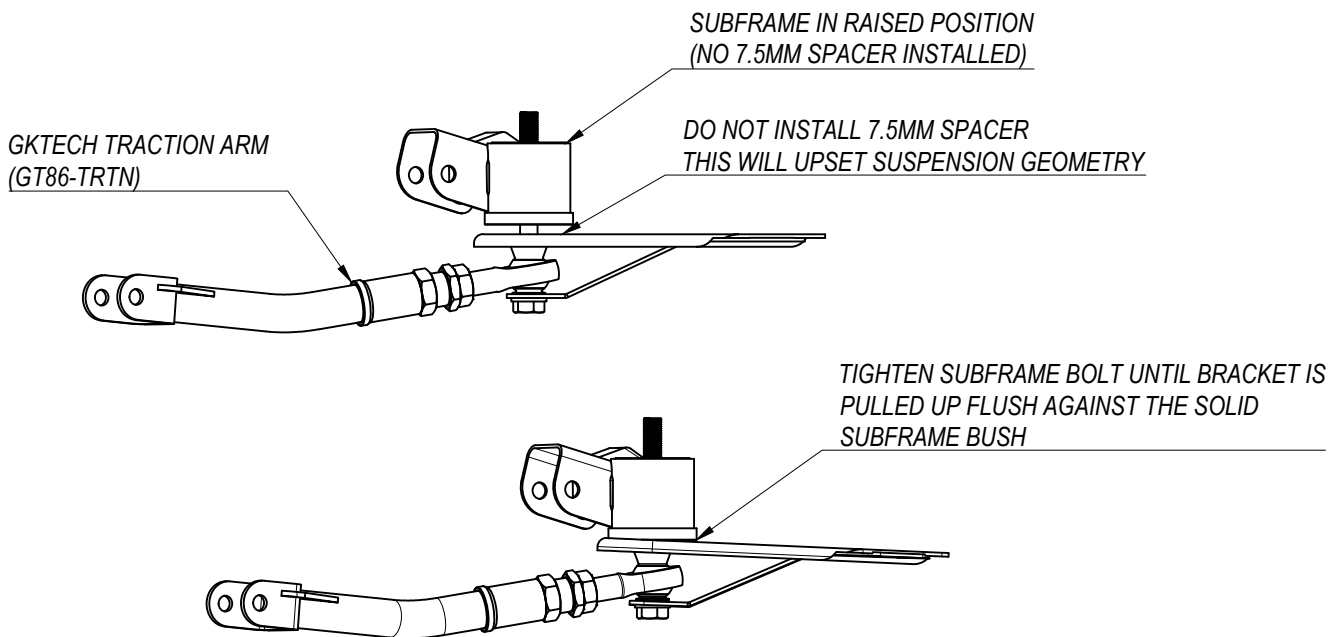
GT86-RISR

12. IF USING GKTECH TRACTION ARM (GT86-TRTN) AND OEM SUBFRAME POSITION THEN THE 7.5MM SPACER IS REQUIRED AT THE TOP



13. IF USING THE GKTECH TRACTION ARM (GT86-TRTN) AT THE SAME TIME AS RAISING THE SUBFRAME THEN THE **FRONT** LOWER SPACERS SHOULD NOT BE USED

THIS IS TO ENSURE THAT THE LOCATION OF THE TRACTION ARM STAYS THE SAME RELATIVE TO THE SUBFRAME ITSELF. AS THE SUBFRAME HAS BEEN RAISED 7.5MM, THE TRACTION ARMS LOCATION MUST ALSO BE RAISED 7.5MM



14. REINSTALL THE DIFFERENTIAL USING THE OEM TORQUE SPECS PROVIDED IN DIAGRAM C.
15. REINSTALL THE REAR SUSPENSION ARMS TO THE OEM TORQUE SPECS SHOWN IN DIAGRAM B. ****NOTE**** RAISING THE SUBFRAME WILL ALTER THE WHEEL ALIGNMENT. IF YOU HAVE RAISED THE SUBFRAME IT IS RECOMMENDED TO REDUCE THE STRUT HEIGHT BY 7.5MM OR TO GET A WHEEL ALIGNMENT.
16. FIT THE REAR WHEELS AND LOWER THE VEHICLE.

PAGE 6