



GKTech.com.au is the manufacturer of all parts sold under GKTech brand. All parts are produced overseas by standards and requirements set by GKTech engineer.

- 1) Ball stud/ threaded shaft is from Steel HRC30
- 2) Ball stud housing is from Steel 1040
- 3) Ball stud bearing race is from Plastic POM for low friction
- 4) All hardware is zinc coated for corrosion prevention

Design process involves calculating loads at different suspension mounting points during cornering and braking scenarios and applying them to design models using Finite Element Analyses and the topology is optimised to meet minimum 4x safety margin for material stress.

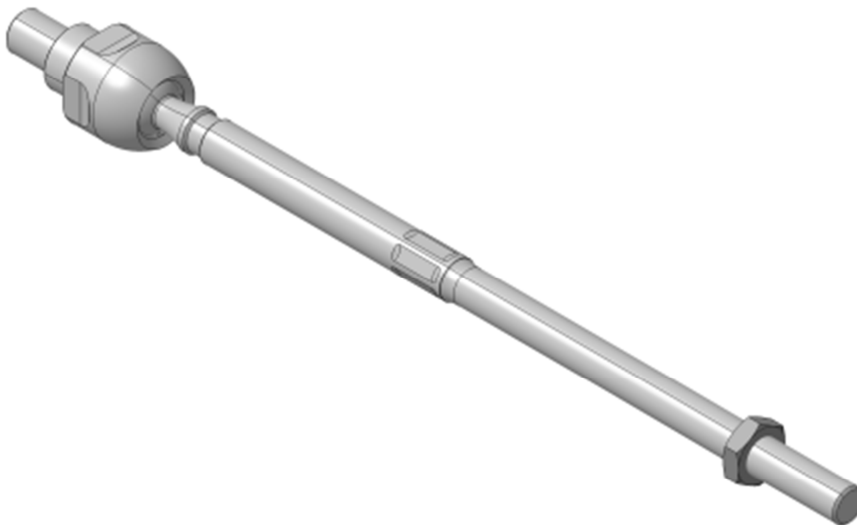


Figure 1. GKtech S-chassis tie rod