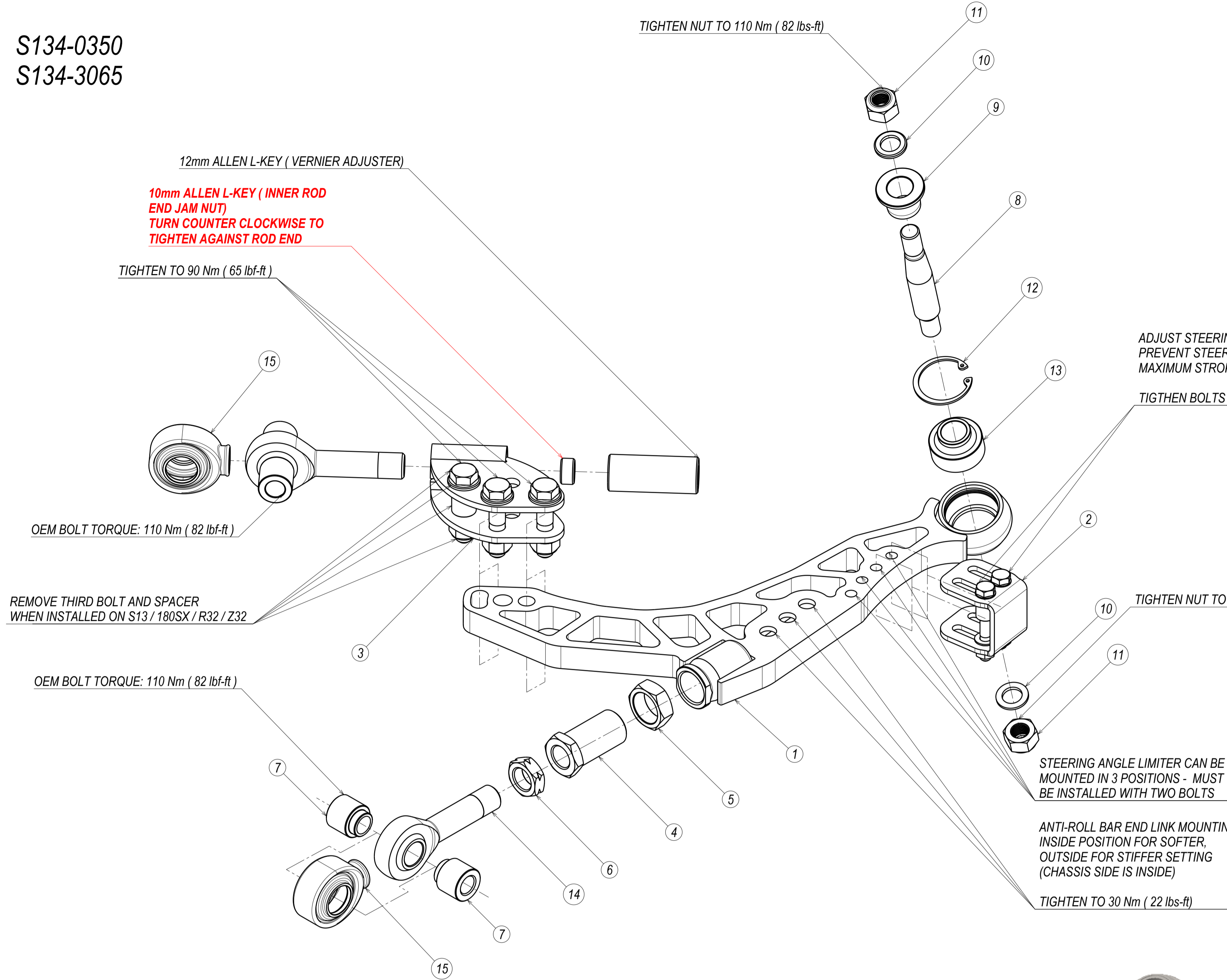


S134-0350  
S134-3065

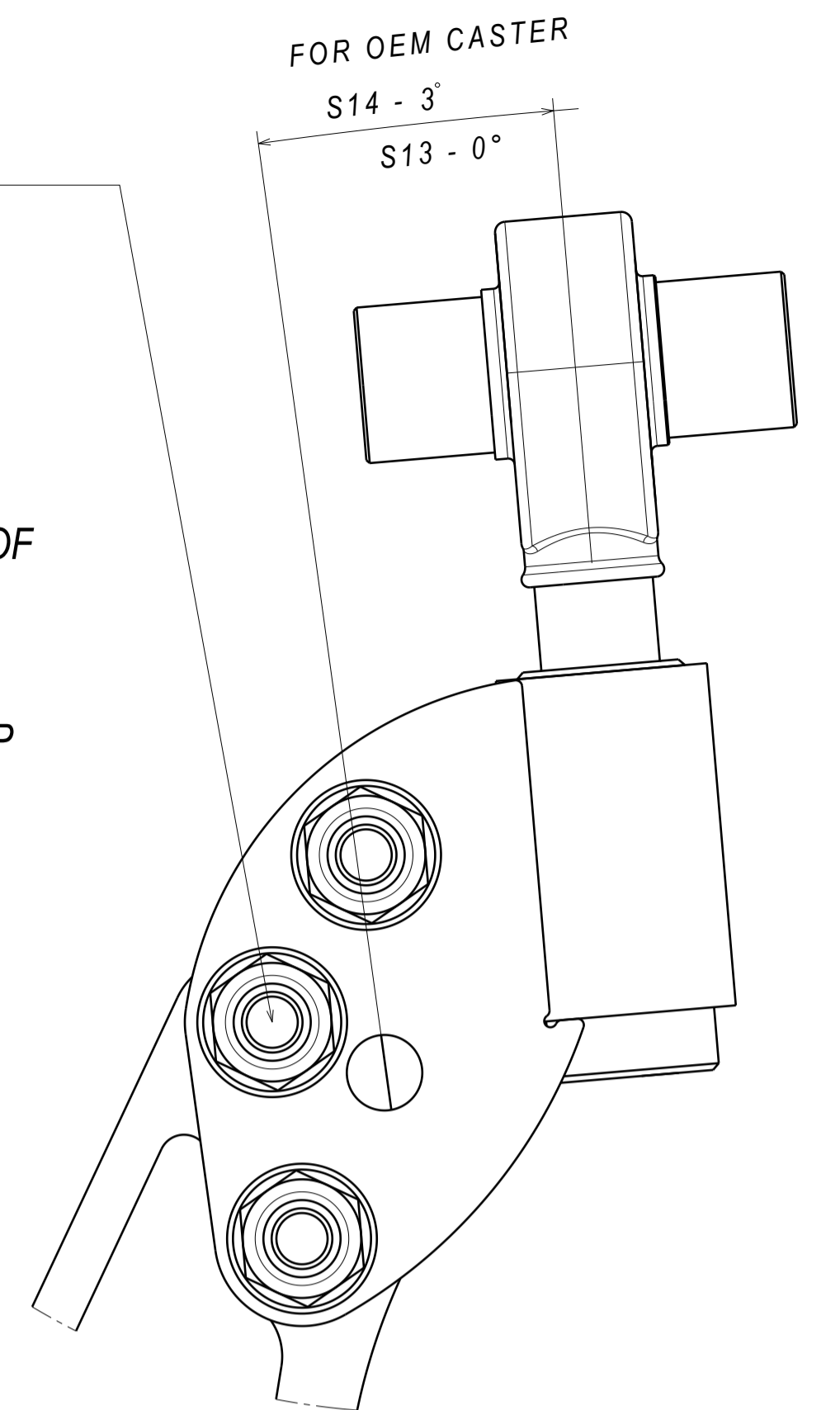


OEM CASTER ALSO CENTERED AROUND ELONGATED HOLE

# CRITICAL!

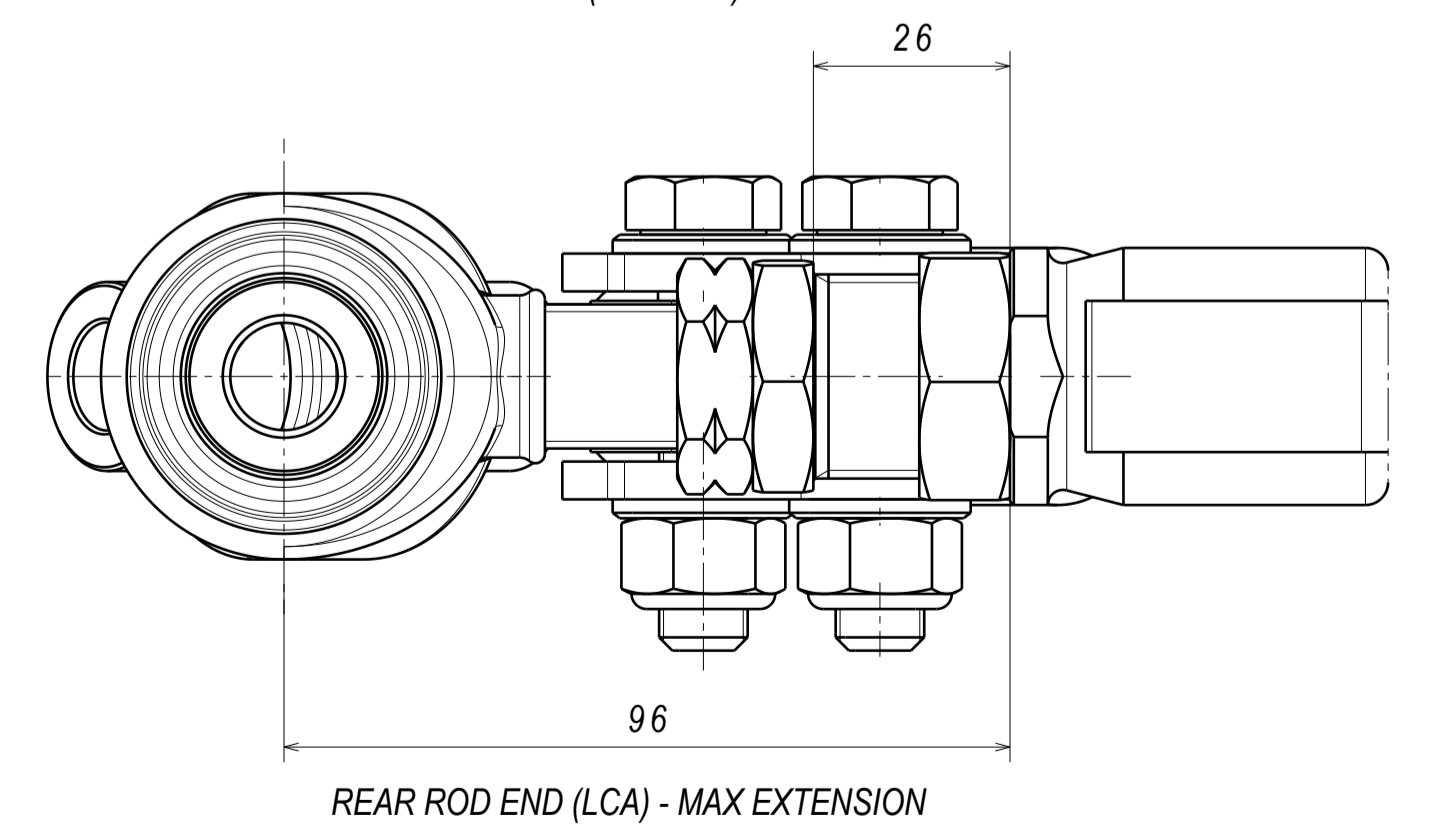
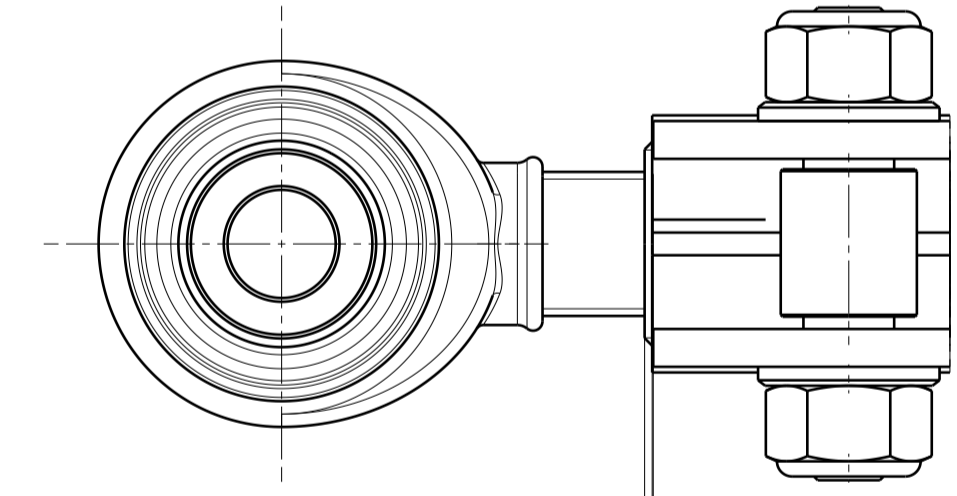
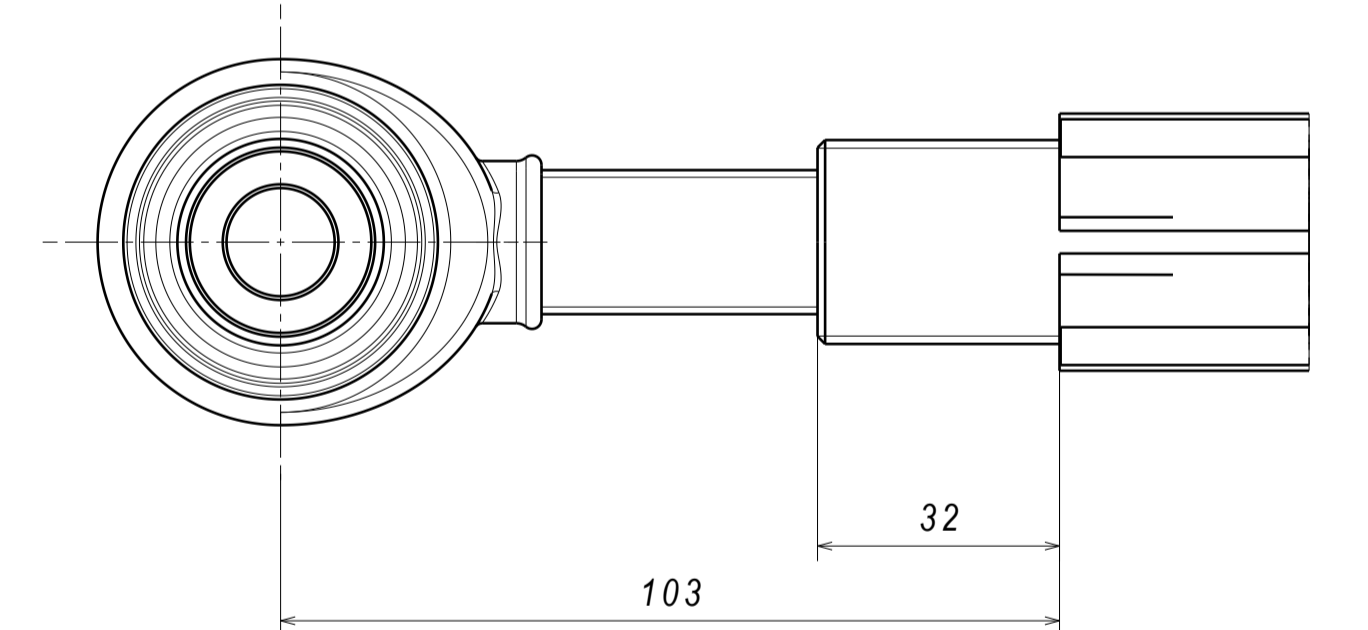
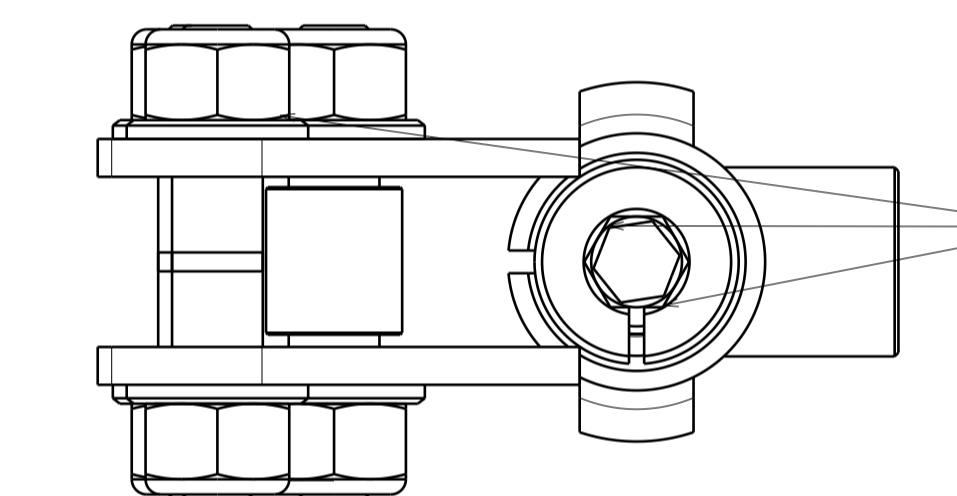
ENSURE THERE IS NO BINDING OF THE ROD END BEARINGS AFTER ADJUSTING THE ARM LENGTH

CHECK BY PUSHING THE ARM UP AND DOWN WITH IT DISCONNECTED FROM THE STEERING KNUCKLE



## HOW TO ADJUST CASTER

1. LOOSEN M12 MAIN BOLTS
2. LOOSEN INTERNAL 10mm HEX SCREW - (TURN CLOCKWISE)
3. TURN OUTER 12mm HEX SLEEVE TO ADJUST CASTER
4. TIGHTEN INTERNAL 10mm HEX SCREW TO 90 Nm ( 65 lbf-ft) - (TURN COUNTER CLOCKWISE)
5. TIGHTEN M12 MAIN BOLTS TO 90 Nm ( 65 lbf-ft)



CASTER BRACKET - S14 / S15 / R33 / R34 POSITION

CASTER BRACKET - S13 / 180SX / R32 / Z32 POSITION

THIRD BOLT AND SPACER NOT REQUIRED IN THIS POSITION

PC NO	COMPONENT NAME	QTY
1	BOTTOM A-ARM WELDING ASM S14 STD R/H	1
2	BOTTOM A-ARM S13/S14 LOCK STOP ASM	1
3	BOTTOM A-ARM S14 BRACKET ADJUSTER	1
4	FLCA VERNIER SLEEVE	1
5	FLCA M27x2 NUT	1
6	NUT 3/4-16 UNF 3B L/H	1
7	SPACER PCML12T 14ID 63W	2
8	S14 SHANK STD	1
9	BALL JOINT SHAFT SPACER - STD LENGTH	1
10	ISO 7092 WASHER 14x24 STEEL ZN HOT	2
11	DIN 985-8 M14x1.5 NYLON LOCKING NUT	2
12	DIN 472 RETAINING RING 40x1.75	1
13	BEARING YPB12T	1
14	ROD END PCML12T-ES	1
15	QA1 PCML12T BOOT REV2.14	1

**S134-0350 - SHORT VERSION**  
- S13/180SX/R32/Z32 = OEM +9mm  
- S14/S15/R33/R34 = OEM +0mm

**S134-3065 - LONG VERSION**  
- S13/180SX/R32/Z32 = OEM +39mm  
- S14/S15/R33/R34 = OEM +30mm