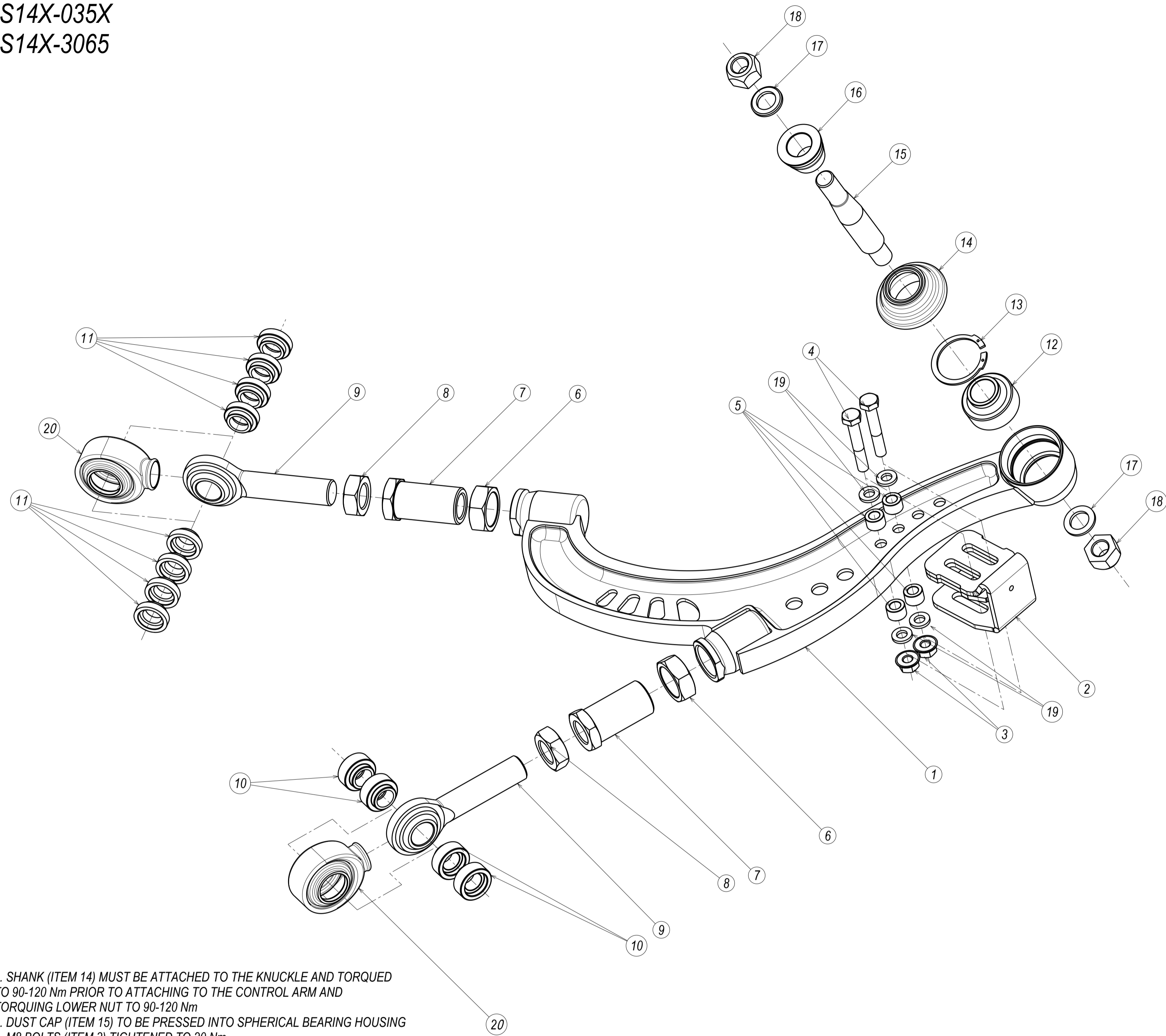
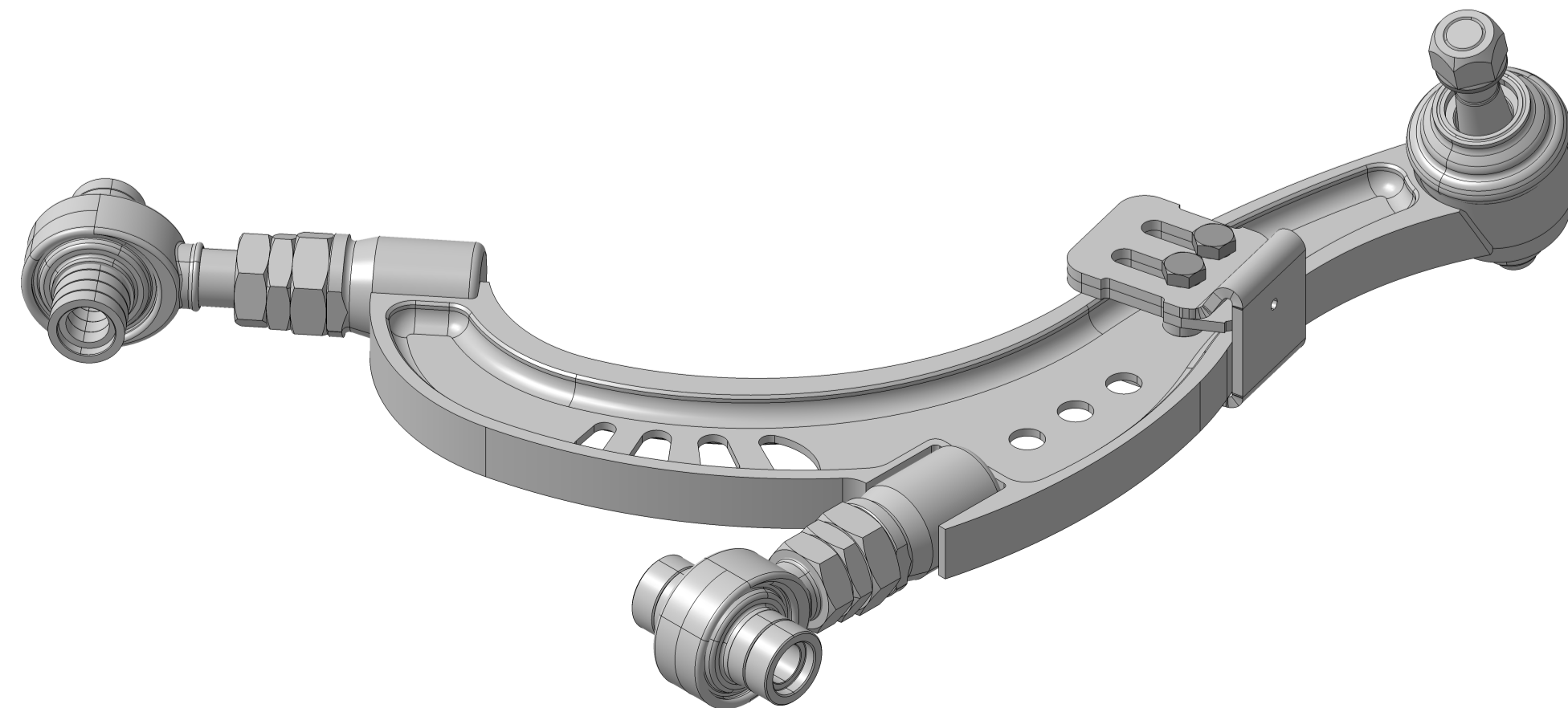


S13X-944X  
 S13X-3774  
 S14X-035X  
 S14X-3065



1. SHANK (ITEM 14) MUST BE ATTACHED TO THE KNUCKLE AND TORQUED TO 90-120 Nm PRIOR TO ATTACHING TO THE CONTROL ARM AND TORQUING LOWER NUT TO 90-120 Nm  
 2. DUST CAP (ITEM 15) TO BE PRESSED INTO SPHERICAL BEARING HOUSING  
 3. M8 BOLTS (ITEM 3) TIGHTENED TO 20 Nm  
 4. ROD END JAM NUTS TIGHTENED TO 200Nm  
 5. ROD ENDS MUST NOT BE TURNED FURTHER THAN 35mm STANDARD POSITION ( SEE EXTRA DRAWING )

PC NO	COMPONENT NAME	QTY
20	PCML12TES ROD END COVER	2
19	STEEL SERRAGATED WASHER DIN 9250 M8	4
18	NYLON LOCKING NUT DIN 985-8 M14x1.5	2
17	ISO 7092 WASHER 14x24	2
16	SHANK SPACER - STD LENGTH	1
15	SHANK - S14 FRONT-STD LENGTH	1
14	DUST BOOT - FRONT LCA	1
13	INTERNAL INVERTED CIRCLIP - 40MM	1
12	SPHERICAL BEARING YPB12T	1
11	FLCA ROD END SPACER - FRONT	8
10	FLCA ROD END SPACER - REAR	4
9	ROD END PCML12TES	2
8	3/4-16 ASTM A563 GRADE A ZINC STEEL JAM NUT	2
7	FLCA VERNIER SLEEVE	2
6	FLCA M27x2 JAM NUT	2
5	FLCA LOCK STOP SPACER	4
4	ISO 4014 BOLT M8x50	2
3	NUT ISO 4161 M8 FLANGED	2
2	FLCA LOCK STOP WELDING ASM	1
1	FLCA WELDING ASM R/H S14 STD	1
PC NO	COMPONENT NAME	QTY

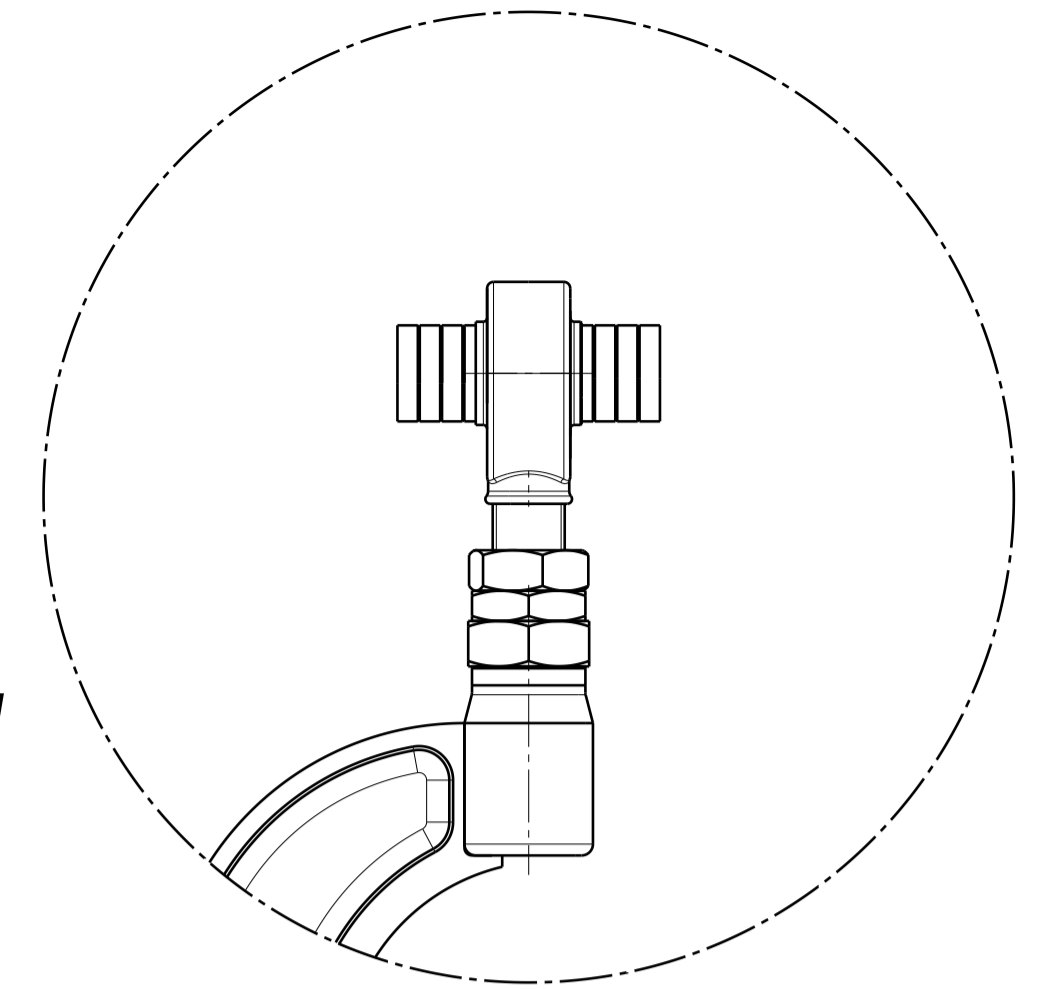


# CRITICAL!

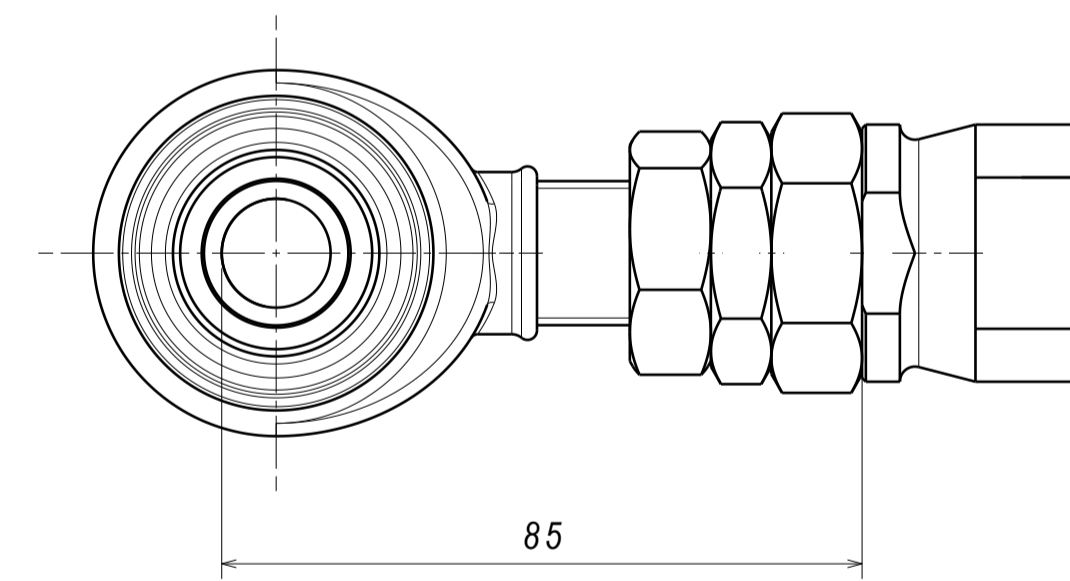
SPACERS ARE TO BE STACKED CONCENTRIC TO ONE ANOTHER. THEY ARE DESIGNED TO ADJUST CASTER SETTINGS AND COMPENSATE FOR EXTENDING THE REAR ROD END FOR ADJUSTING TRACK WIDTH AND CHASSIS CLEARANCE. MINIMUM SPACER PER SIDE IS ONE. ROD END NEEDS TO BE ADJUSTED TO SUIT

NB! ENSURE THERE IS NO BINDING OF THE ROD END BEARINGS AFTER ADJUSTING THE ARM LENGTH

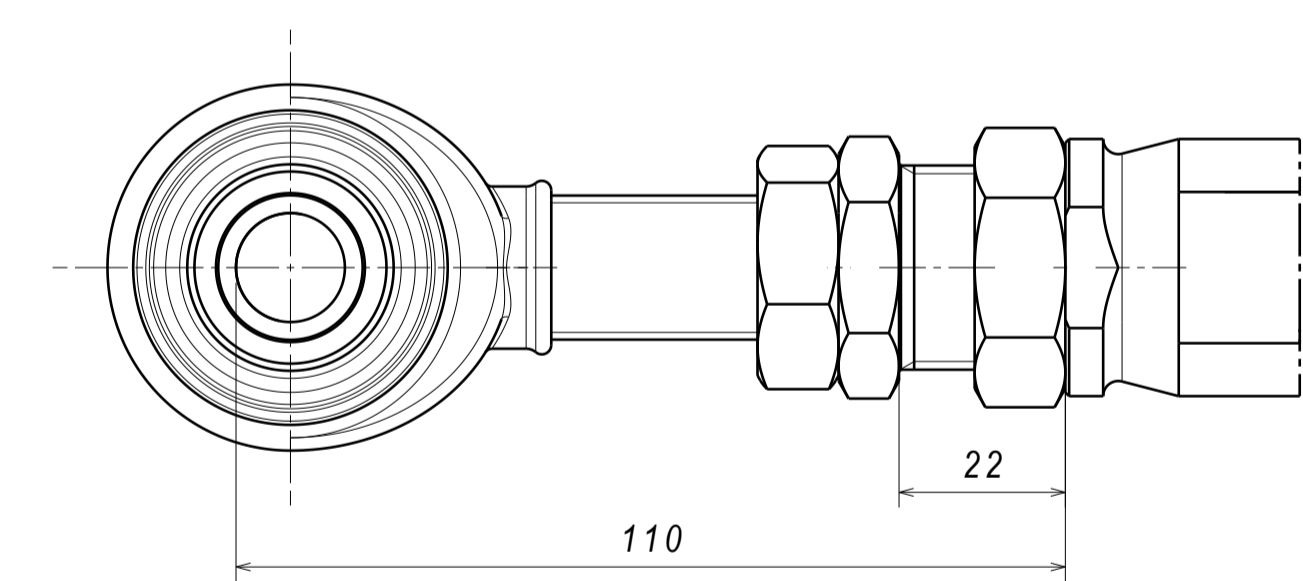
CHECK BY PUSHING THE ARM UP AND DOWN WITH IT DISCONNECTED FROM THE STEERING KNUCKLE



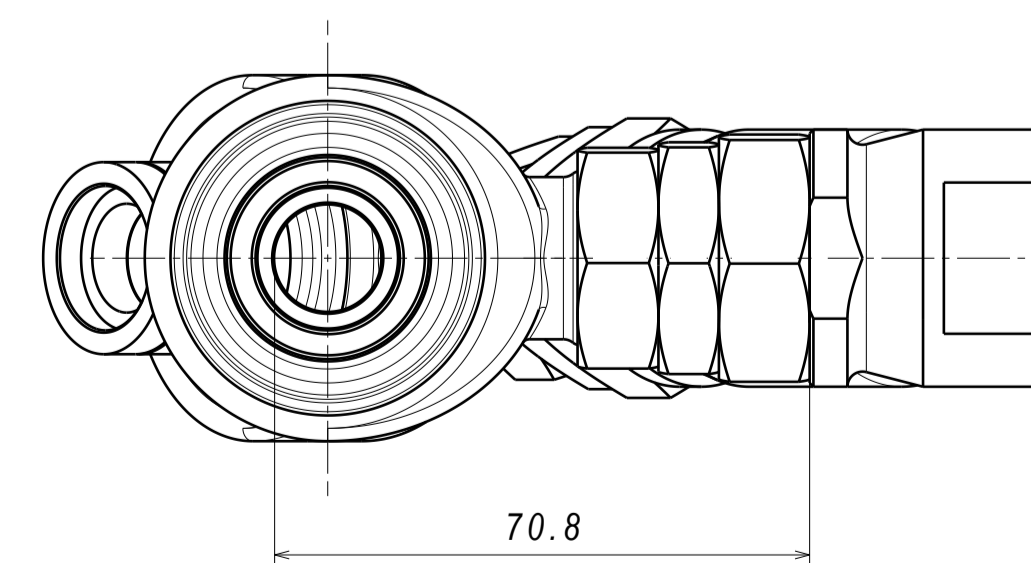
FRONT ROD END (TENSION) - OEM SPEC



FRONT ROD END (TENSION) - MAX EXTENSION



REAR ROD END (LCA) - OEM SPEC



REAR ROD END (LCA) - MAX EXTENSION

