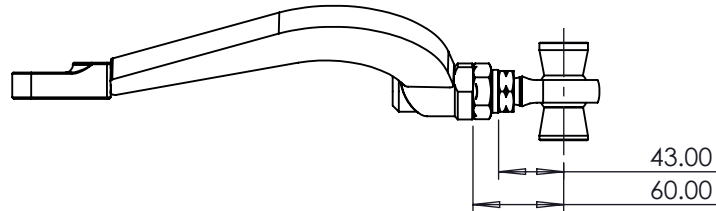
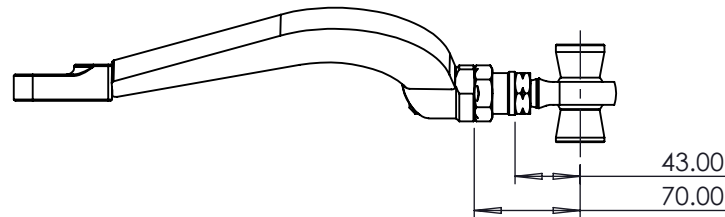


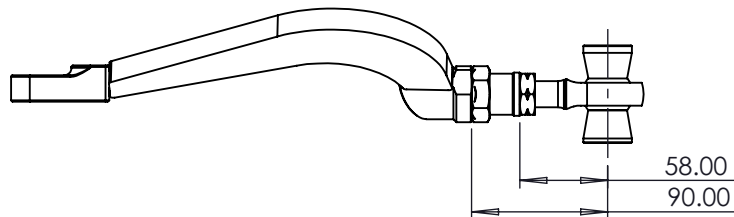
MIN ADJUSTMENT



OEM ADJUSTMENT



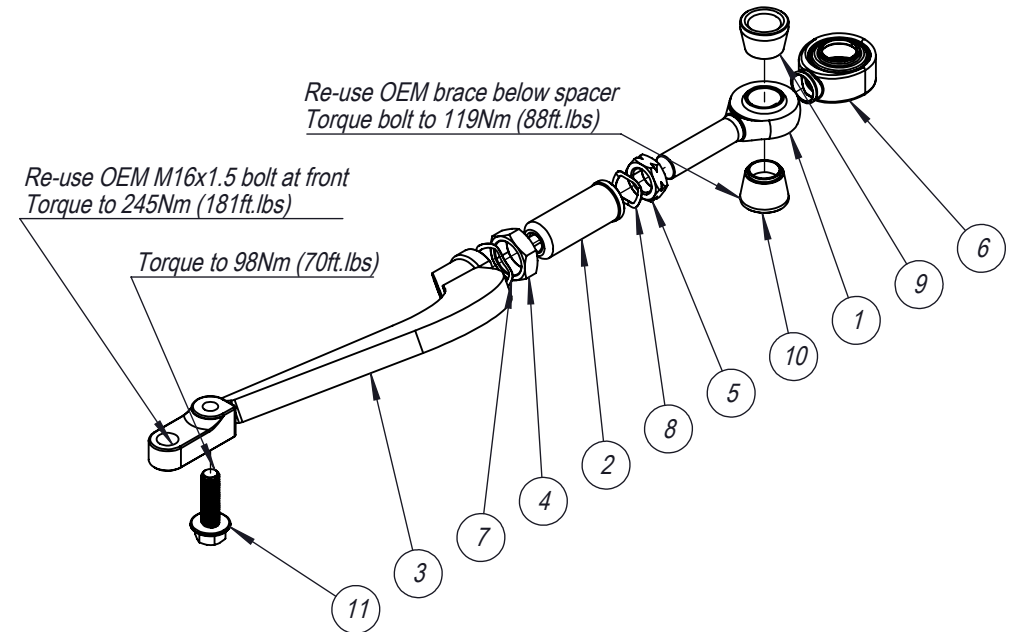
MAX ADJUSTMENT



ITEM NO.	DESCRIPTION	QTY.
1	PCML14T-ES	1
2	VERNIER SLEEVE - M27x3/4 REAR DRIVE	1
3	XE10 Caster Arm ASM RHS	1
4	M27x2 JAM NUT	1
5	NUT 3/4-16 UNF 3B L/H	1
6	PCMX12T BOOT	1
7	32MM WAVE WASHER	1
8	27MM WAVE WASHER	1
9	SPACER PCXX14T - 22.0 x 64.6 - LM	1
10	SPACER PCXX14T - 20.0 x 64.6 - LM	1
11	DIN6921 Flange Hex Head Bolt Grade 12.9	1

Recommended Installation Order

1. Install spacers + bearing side + OEM brace first - Leave the bolt loose
2. Install M12 bolt through lower control arm and into GK caster arm
3. Hand tighten M12 bolt to align the caster arm to LCA
4. Now the Front M16 bolt can more easily be installed, lower control arm will still need to be manipulated to line up and install bolt
5. Tighten all bolts and nuts to specified torque specs



How to adjust arm

1. Ensure both M16 and M12 bolts are loose along with 32mm and 27mm nuts
2. Turn adjuster using 12mm Allen drive socket to desired length
3. Ensure that M12 bolt moves freely during adjustment, if adjustment gets tight, then you have reached maximum adjustment of M12 bolt inside lower control arm hole
4. Lock bolts and nuts in place to lock arm

CRITICAL!

CHECK FOR ROD END BEARING ALIGNMENT
AFTER TIGHTENING THE ADJUSTING MECHANISM
ROD END TO BE PERPENDICULAR TO THE SPACERS

