

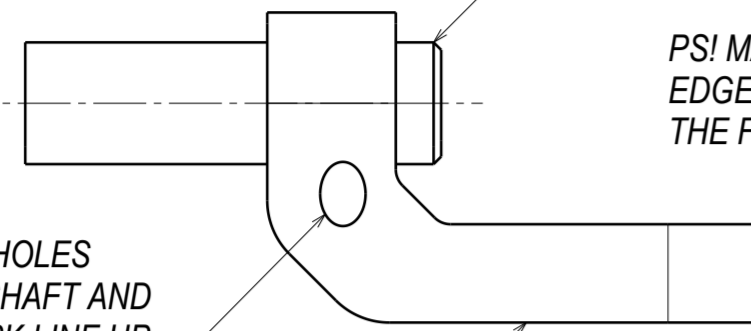
Z33X-SHFT 2/3

1 - MODIFY SHIFTER SHAFT BY CUTTING IT SHORTER TO MAKE IT CO-PLANAR WITH THE SHIFTER'S FORK

PS! MAKE SURE TO REMOVE SHARP EDGE AFTER CUTTING BEFORE SLIDING THE FORK OFF FOR EASIER INSTALLATION

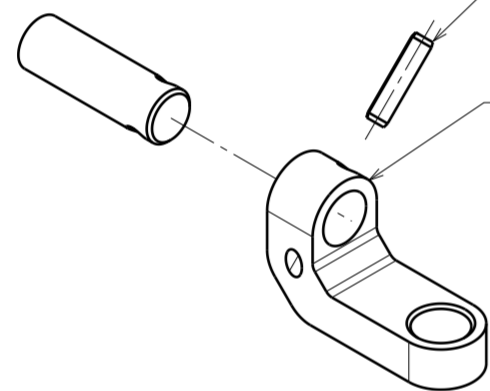
MAKE SURE HOLES INSIDE THE SHAFT AND SHIFTER FORK LINE UP

SHIFTER FORK



3 - INSTALL SPRING PIN (ITEM 2)

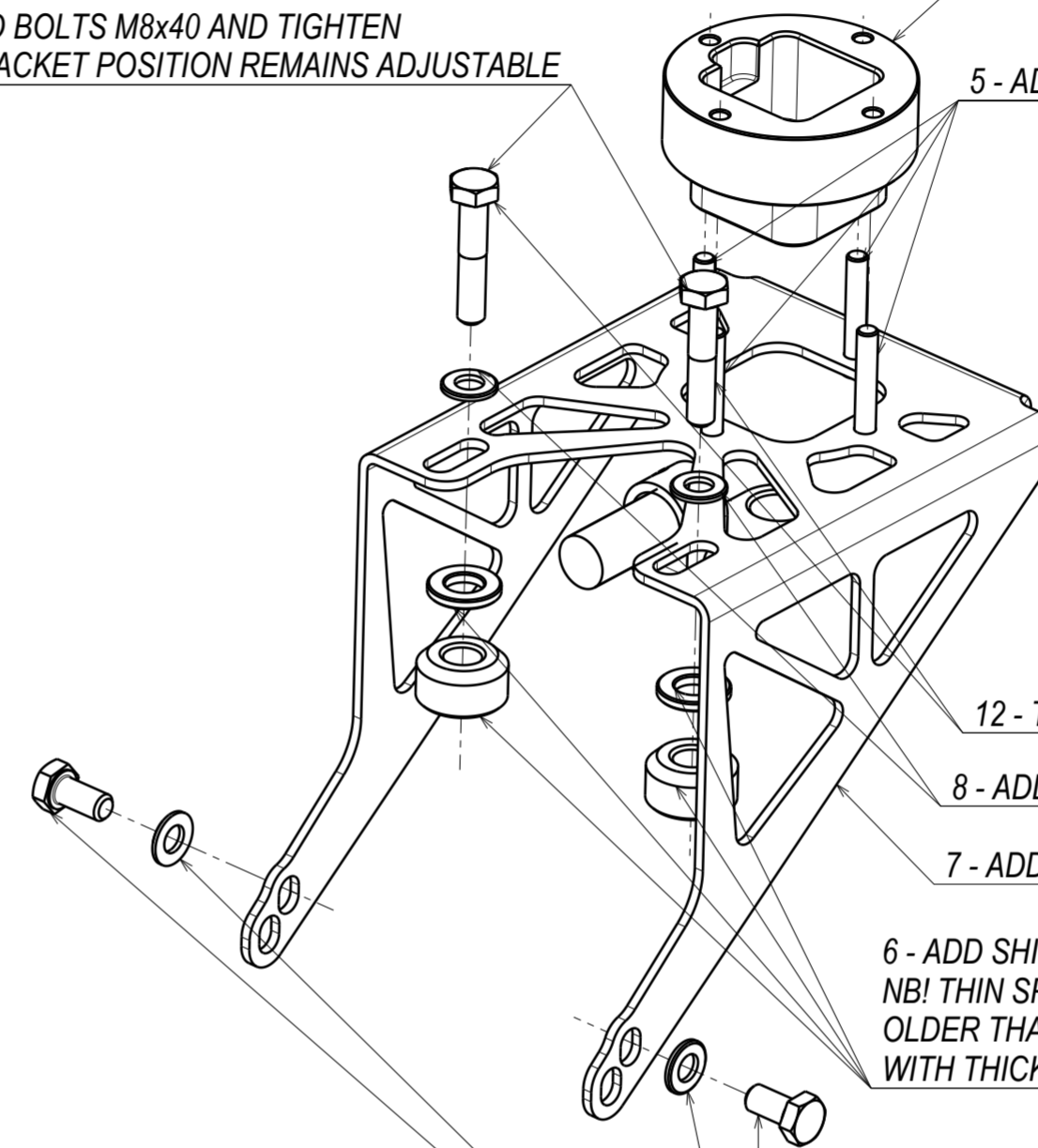
2 - INSTALL SHIFTER FORK (ITEM 1) OVER GEARBOX SHIFTER SHAFT



9 - ADD BOLTS M8x40 AND TIGHTEN SO BRACKET POSITION REMAINS ADJUSTABLE

4 - ADD SHIFTER HOUSING (ITEM 7)

5 - ADD FOUR SCREWS M6x35 AND TIGHTEN TO 8Nm / 6 lbs/ft



12 - TIGHTEN BOLTS TO 20Nm / 15lbs/ft

8 - ADD 8x16 WASHERS (ITEM 14)

7 - ADD SHIFTER BRACKET (ITEM 4)

6 - ADD SHIFTER BRACKET (ITEM 3) SPACERS
NB! THIN SPACERS ARE FOR GEARBOX MODELS OLDER THAN VERSION CD009 AND USED TOGETHER WITH THICK SPACERS

10 - ADD WASHER 8x16 (ITEM 14) AND BOLT M8x16 (ITEM 6) AND TIGHTEN BOLT TO 20Nm / 15 lbs/ft
UPPER HOLE IS FOR POST-CD009 GEARBOX VERSIONS
BOTTOM HOLE IS FOR PRE-CD009 GEARBOX VERSIONS

15	350Z SHIFTER BRACKET EXTRA SPACER	2
14	ISO 7089 8x16 GRADE A NORMAL SERIES PLAIN WASHER	4
13	ISO 4032 M6 STEEL GRADE A HEXAGON NUT	4
12	ISO 7089 6x12 GRADE A NORMAL SERIES PLAIN WASHER	4
11	350Z SHIFTER REVERSE LOCKOUT PLATE	1
10	350Z SHIFTER LEVER ASSEMBLY	1
9	COMPRESSION SPRING	1
8	ISO 7380 M6x35 HEXOGEN SOCKET BUTTON HEAD SCREW 10.9	4
7	350Z SHIFTER HOUSING	1
6	ISO 4014 M8x16-1.25 HEXAGON HEAD BOLT 8.8	2
5	ISO 4014 M8x35-1.25 HEXAGON HEAD BOLT 8.8	2
4	350Z SHIFTER BRACKET	1
3	350Z SHIFTER BRACKET SPACER	2
2	ISO 8752 SPRING PIN 6x26 STEEL SLOTTED HEAVY DUTY	1
1	350Z SHIFTER FORK	1
ITEM NO.	DESCRIPTION	QTY